

HDMI & USB Keyboard Mouse CAT5 Extender

ITEM NO: HKM01E HDMI & USB Keyboard Mouse CAT5e Extender



The HKM01E is design to extend full HDMI & USB keyboard mouse over one CAT5e/6 up to 150 meters. Transmitter built in local HDMI monitor output for local monitor and provides superior video quality up to 1920 x 1200 resolutions. With 2 USB port to extend keyboard and mouse signal over same CAT5e/6 cable. It is optimized for applications at security monitoring and multimedia display and digital signage, home network integration, and industrial control, hospital, education.

Features:

- Extend HDMI and USB keyboard mouse signals over one CAT5e/CAT6 cable.
- **Supports resolutions full HD up to 1920x1080p@60hz.**
- **Transmission range up to 150M over CAT5e, 160M over CAT6.**
- **HKM01ET transmitter built in HDMI loop output.**
- HKM01ER receiver unit with 2 ports USB devices to extend USB keyboard and mouse.
- USB compatible with USB 2.0, USB 1.0 & USB 1.1
- Perfect for control remote machines and security monitoring systems, digital signage application.
- **Option model: SR01 signal repeater for longer distance application.**

Installation View:



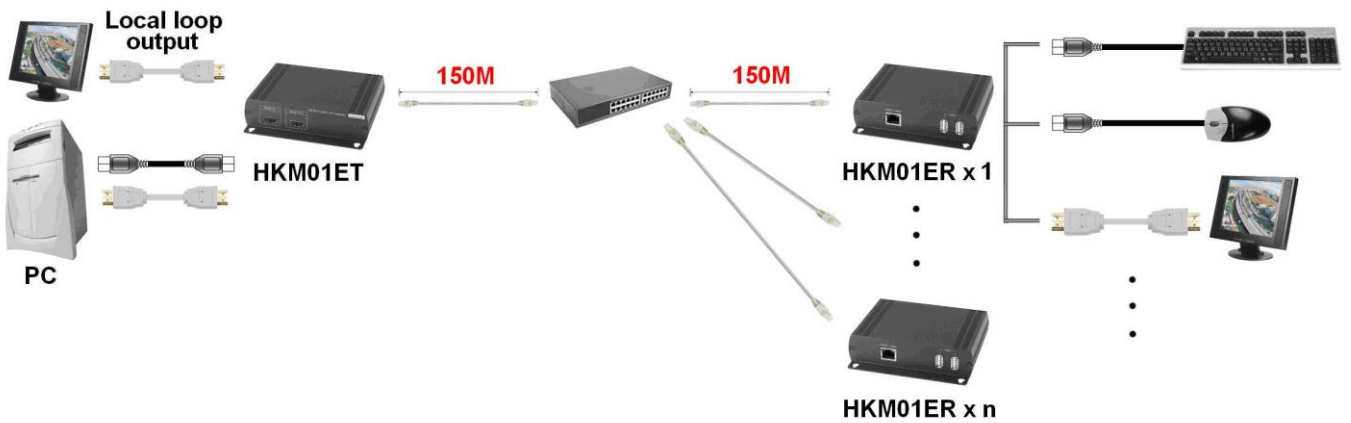
Optional Model: SR01 Signal Repeater (order separately)

- Extend data signal for an additional 120meters.
- Application for HKM01E signals for extra long range transmission.
- Ability to cascade connection with multiple SR01 for long range transmission
- Built in LED status indication.
- External power required.
- Plug and play for easy installation.

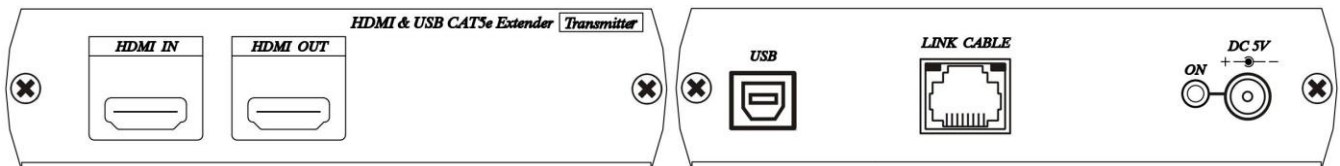
Work with HKM01E CAT5 Extender:



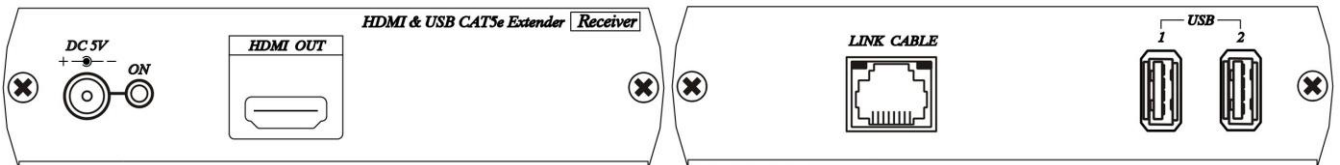
HDMI over IP Solution: support point to many connections via network switch:



**Panel View:
HKM01ET**



HKM01ER



LED Indication Status:

Front Panel Green LED:
Power on/off

RJ45 LED:
Orange Flash: Data transmission
Green On: Linking

RJ45 Define:

Link Cable (TIA/EIA-568-B)

- | | |
|-----------------|----------|
| 1. Orange-white | Data 1 + |
| 2. Orange | Data 1 - |
| 3. Green-white | Data 2 + |
| 4. Blue | Data 3 + |
| 5. Blue-white | Data 3 - |
| 6. Green | Data 2 - |
| 7. Brown-white | Data 4 + |
| 8. Brown | Data 4 - |

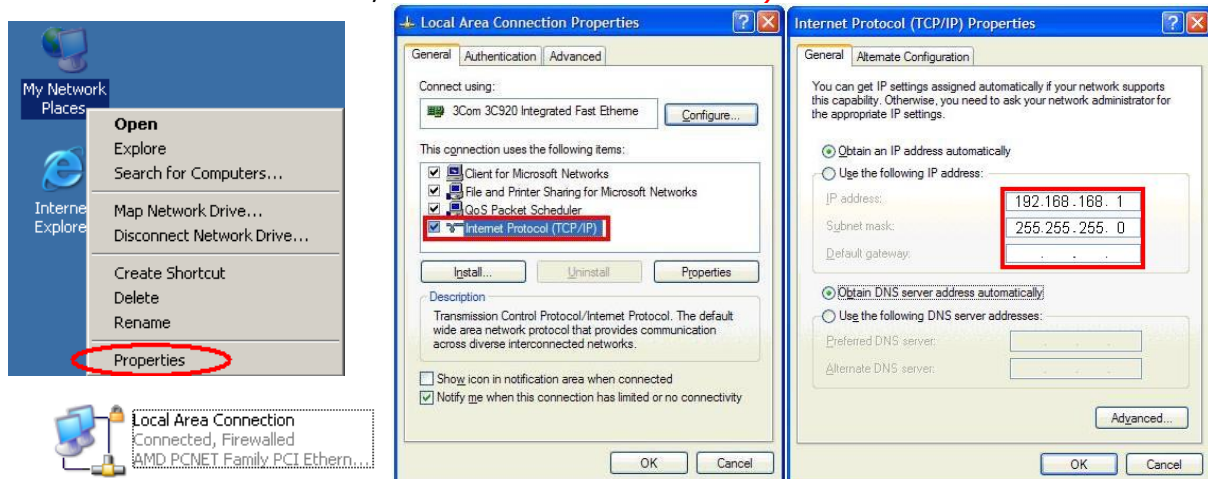
Computer IP Address Setting:

System default IP address is **192.168.168.55** for **HKM01ET**, **192.168.168.56** for **HKM01ER** (subnet mask 255.255.255.0), Your computer must set in same subnet mask to enter the web setup page.

To change the IP address of computer please follow below step: (based on Windows XP):

Right click on "My Network Place" → "Properties" then right click on "Local Area Connection" → "Properties" then double click on "Internet Protocol (TCP/IP)" to setting as below:

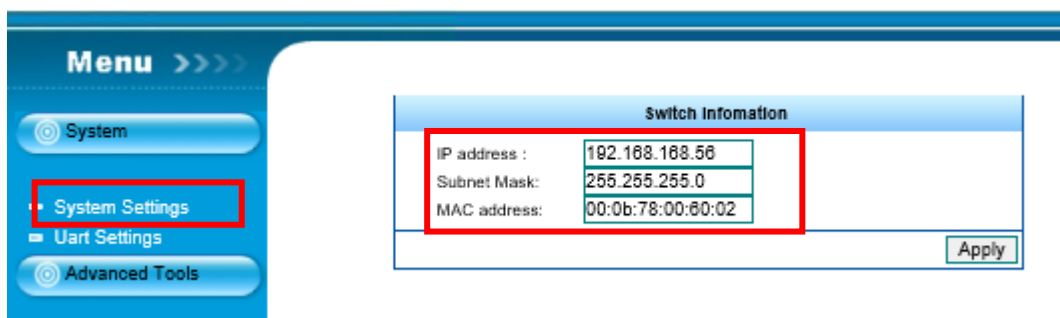
(IP address **192.168.168.1**, sub mask **255.255.255.0**)



Login in to the web:

Use CAT5e cable to connect transmitter/receiver RJ45 port to PC LAN port, enter the IP address of TX/RX in the web browser.

After login to the web, click System Settings you can change IP address, Subnet Mask, MAC address at System page, then click Apply to finish setting.



Cable:

Video Link cable using high quality CAT5e UTP/STP/FTP or CAT6 UTP cable.

Caution:

1. This device not support wireless and gaming keyboard mouse.
2. The cabling must away from any equipment with electromagnetic wave, i.e.: microwave, radio equipment, high voltage.

Package Include:

HKM01ET Transmitter x 1
HKM01ER Receiver x 1
USB A to B cable x 1
DC 5V 2Amp power adapter x 2

Specification:

ITEM NO.	HKM01ET	HKM01ER
Support Resolution	640x480@60Hz, 800x600@60 Hz, 1024x768@60 Hz, 720x480p@60 Hz, 720x576p@50 Hz, 1280x720p@60 Hz, 1280x720p@50 Hz, 1920x1080i@60 Hz, 1920x1080i@50 Hz, 1920x1080p@60Hz	
Transmission Distance	CAT.5e/6 : 120M (Max)	
HDMI Connector	HDMI Type A x 2	HDMI Type A x 1
USB Connector	USB Type B x 1	USB Type A x 2
Link Connector	RJ45 x 1	
Power Supply	DC 5V 2A	
Power Consumption	1.2Amp (Max.)	0.8Amp (Max.)
Temperature	Operation: 0 to 55°C, Storage: -20 TO 85°C, Humidity: up to 95%	
Dimensions mm	125 x 125 x 30	125 x 125 x 30
Weight g	355	350

RoHS   

Rev.A