



# **CAMPRO VMS**

## **User Manual**

**V2.0.0**

# Contents

<b>Contents</b> .....	2
1. Introduction.....	3
1.1. Brief Introduction.....	3
1.2. System Features.....	3
1.3. System operating environment.....	3
2. CAMPRO VMS Operation.....	4
2.1. Start and Login.....	4
2.1.1. Login.....	4
2.1.2. Logout.....	5
2.2. Interface introduction and features description.....	6
2.2.1. Interface introduction.....	6
2.2.2. Device management.....	6
2.2.3 System setting.....	11
2.2.4. Real-time preview.....	15

# 1.Introduction

## 1.1. Brief Introduction

CAMPRO VMS is provided to small video surveillance network for preview / playback / record and other services. This user manual may contain some inaccurate information and the contents of this manual will be updated as product features and functions are changed. We will periodically modify and update the products or procedures described in this manual. The updated contents will be added in a new version of the manual without prior notice

## 1.2. System Features

- ◆ Support I-cloud devices adding and management
- ◆ Simplifying system, easy operation, ads-free
- ◆ Realize centralized user management, fault management, systems maintenance and TOPO navigation
- ◆ Provide streaming media transfer function
- ◆ Provide streaming media storage and playback function, watch playback connection status and provide status notification.

## 1.3. System operating environment

Operating System: Microsoft Windows XP sp1 or above CPU:

Intel Pentium IV 2.4 GHz or above

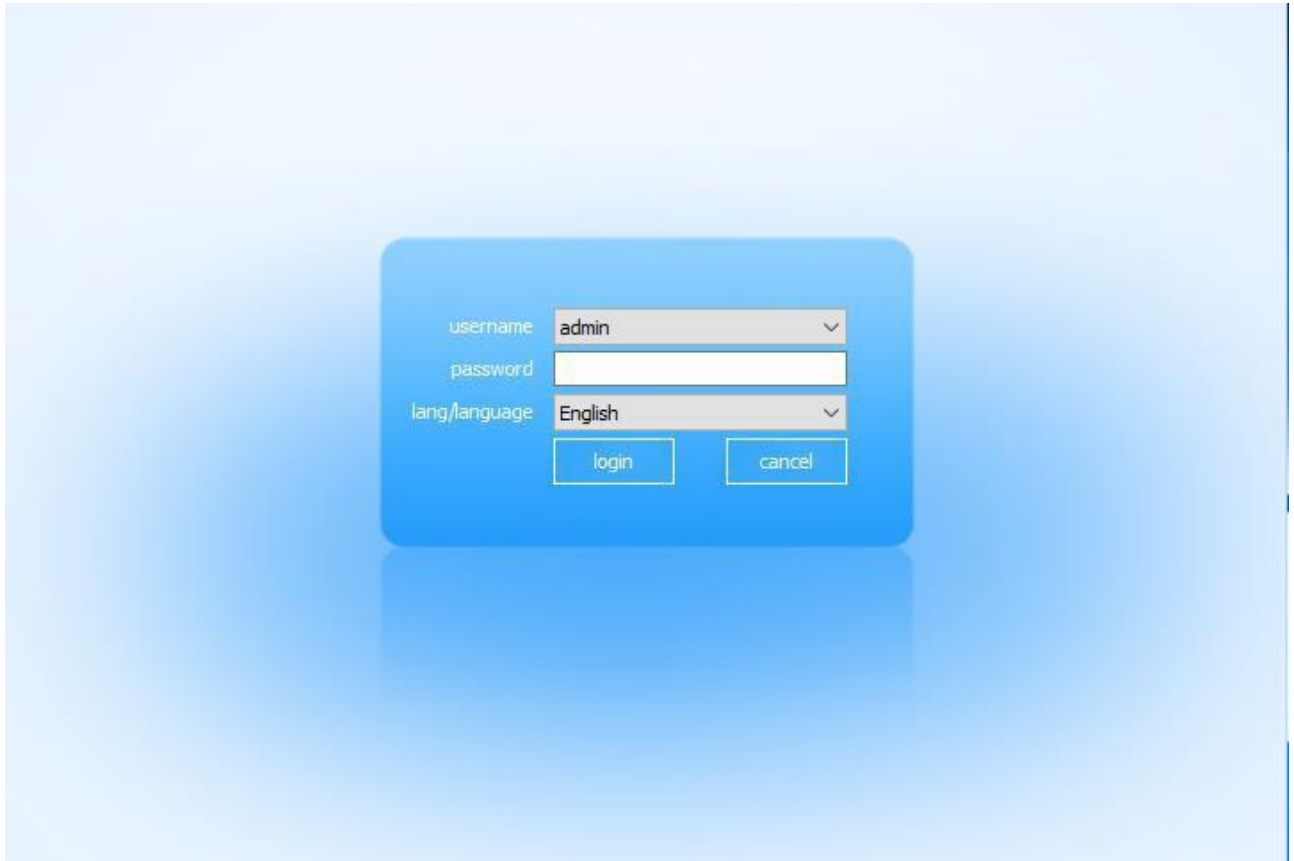
Memory: 1G or above

## 2.CAMPRO VMS Operation

### 2.1. Start and Login

#### 2.1.1. Login

Run CAMPRO VMS, the register dialogue box will appear shown as the figure below



User Name: user name of CAMPRO VMS, the default name of supervisor is admin


Password: user password. The default password is null

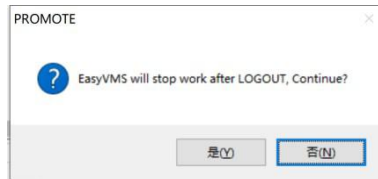
#### Notes:

The head-tail line feeds, spaces and tabs will be removed automatically. The characters of [%] and ['] , and password can't be null and doesn't support function of paste.

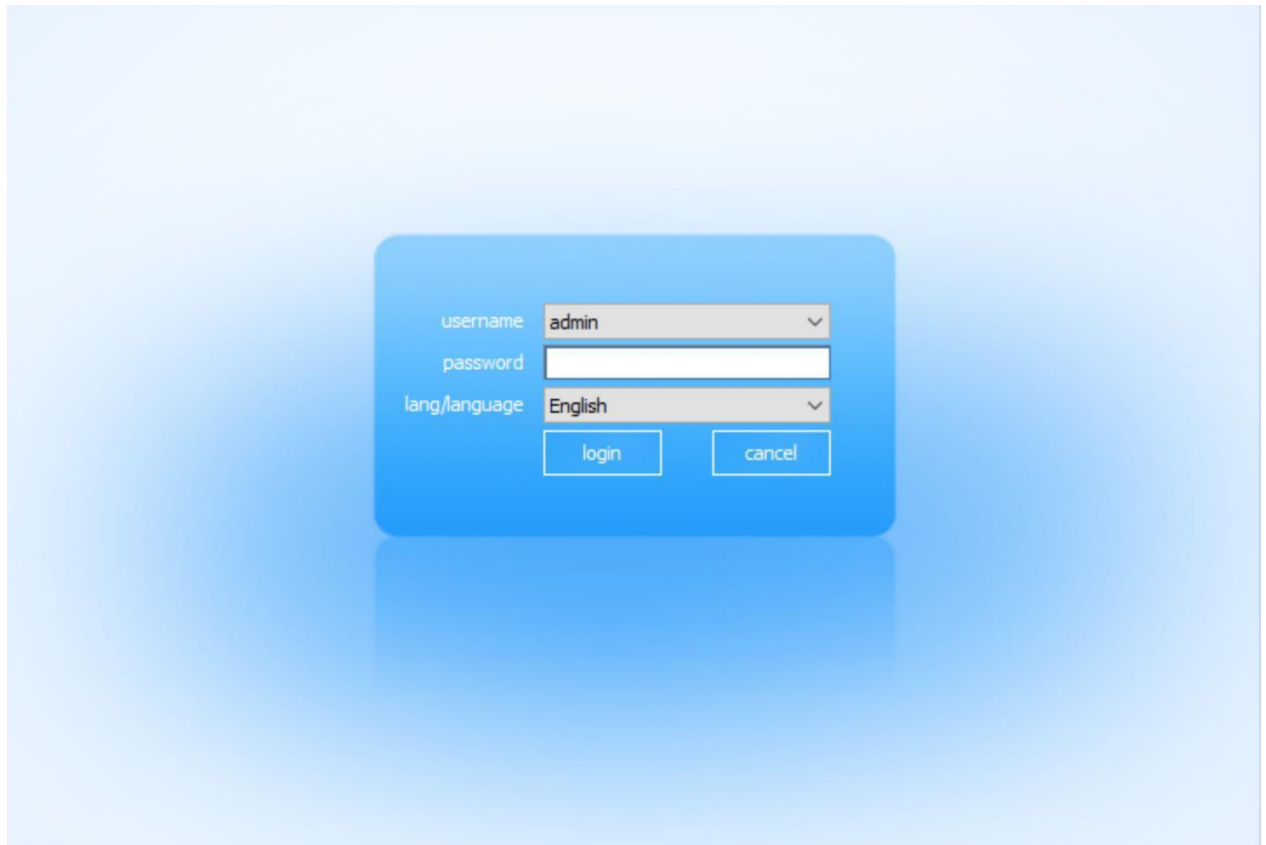
Click Log-in button , wait for verification and initialization

## 2.1.2. Logout

Click the button  on the top right corner of CAMPRO VMS, hint will be pop up to logout



Click that you can login again as following:

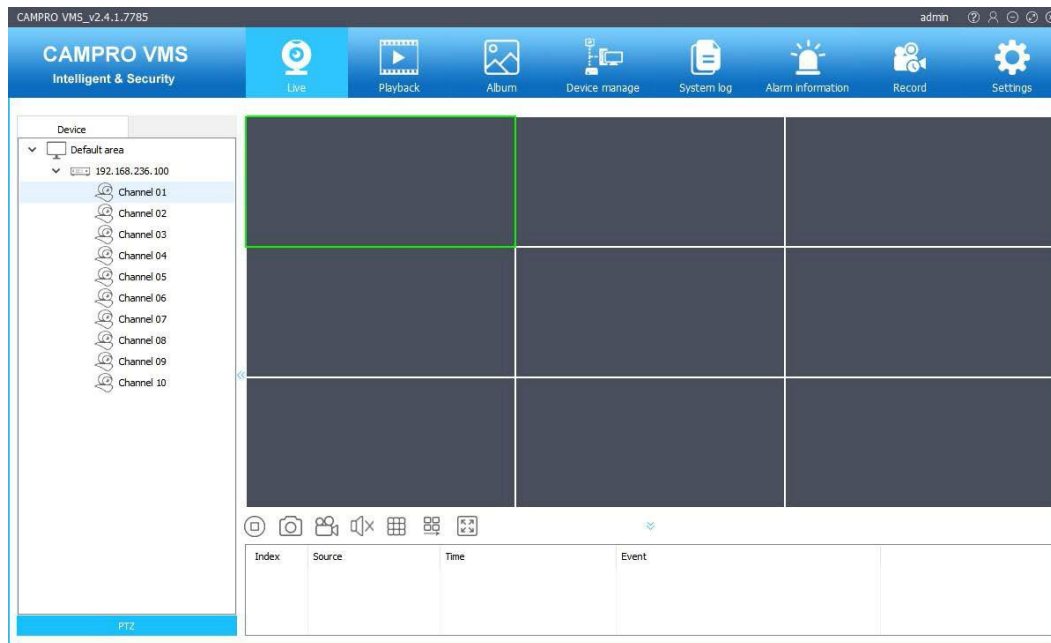


You can switch account and language on the page of logout

## 2.2. Interface introduction and features description

### 2.2.1. Interface introduction

Choose CAMPRO VMS on the start menu, start the shortcut on the desktop. After login, it will show as following: Select CAMPRO VMS from the start menu or double click the shortcut icon to open CAMPRO VMS, after login, host screen shown as the following:



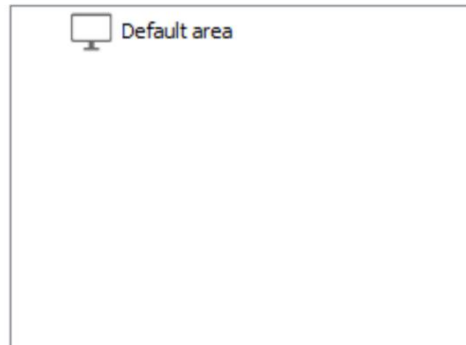
The navigation buttons on the upper line of the screen are: Real time Monitor, Remote playback, Electronic Map, Device Management, Log Query, alarm information and System Settings. Click icon to open the corresponding screen. The left part of the screen is device navigation. The right part is display area. The icon on the top right corner from the left to right are: help, logout, minimize, maximize, close. First, begin with Device Management to add devices.

### 2.2.2. Device management

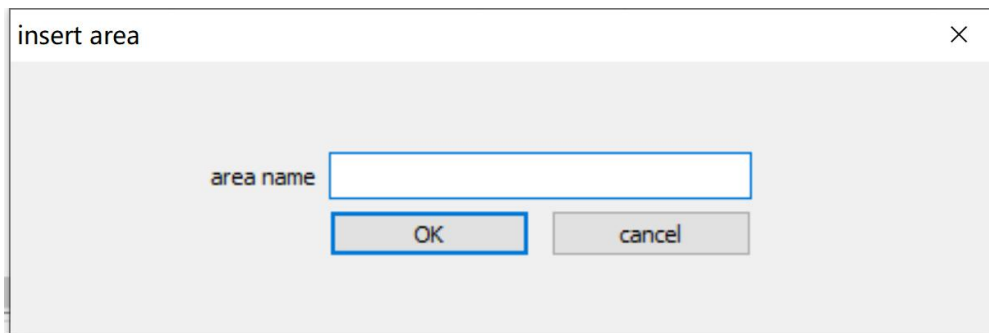
Click Device Management icon to enter into the device management interface shown as the figure below. Users can add, modify, and delete devices or region, set the functions of device time announcement, timing and alarm clearing.

#### 2.2.1.1. Area Configuration

To manage the devices in area, default area is added



You can also right click to add new customized area.

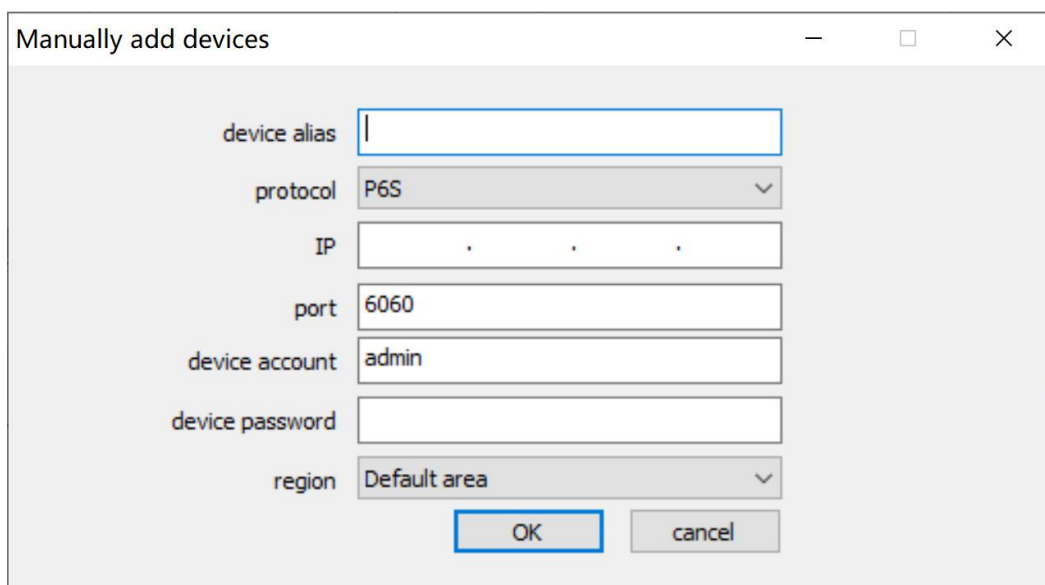


## 2.2.2.2 Add, delete and modify devices

There are generally two methods to add devices to system: add manually and search devices in LAN

### Add manually:

Enter the page of device management, click devices adding and choose "add manually", the pop-up box will be shown as following:




Filling in the device name, device type, device address, signal port, user name and password

manually to dialog box; users also can modify the device area here.

Click **【Ensure】** button after settings, if the filling information is correct and the device is working normally, you will find the established device and “online” state on Device management > Added device page (Fig. below).

device exist already

manually add   modify   remove batch   Batch upgrade


<input type="checkbox"/> alias	type	Protocol	IP/Cloud ID	channel	firmware version	port	status
 192.168.3.156	IPG-8020PSD-FR	P6S	192.168.3.156	1	1.1.1-20191206Z1S	6060	connected

## Searching and Adding in LAN:

Enter into Device management > Online device in LAN interface, checking all the device which can be added:

active device in Lan

add batch   modify IP batch   detect protocol: ALL   refresh

<input type="checkbox"/> IP	MAC	cloud ID	channel	type	Protocol	firmware version	Status
 192.168.3.156	8FE1887A-72EE-403f...		1	IPG-8020PSD-FR	ONVIF		-

Choose one or some device, click **【Add the selected】** button, pop up the Add Device interface, filling the device name, device type, device address, signal port, user name and password manually in the dialog box; users also can modify the area here.

add device

device alias: 192.168.3.156

protocol: ONVIF

IP: 192 . 168 . 3 . 156

port: 80

device account: admin

device password:

region: Default area

OK   cancel



Click **【Ensure】** button, if the filling information is correct and the device is working normally, you will find the established device and “online” state on Device management list page.

device exist already

manually add   modify   remove batch   Batch upgrade

<input type="checkbox"/>	alias	type	Protocol	IP/Cloud ID	channel	firmware version	port	status	region
<input type="checkbox"/>	192.168.3.156	IPG-8020PSD-FR	ONVIF	192.168.3.156	1	1.1.1-20191206Z1S	-	connected	Default area
<input type="checkbox"/>	192.168.3.63	AHB-8304HGB	P6S	192.168.3.63	4	2.4.2-20191228	6060	user name or password e...	Default area

## Equipment delete:

Choose one or some device which need to be removed, click Delete button, the system will prompt you to confirm removing the equipment. Click **【Ensure】** button, the device will be removed from the area list.

device exist already

manually add   modify   remove batch   Batch upgrade

<input type="checkbox"/>	alias	type	Protocol	IP/Cloud ID	channel	firmware version	port	status	region
<input checked="" type="checkbox"/>	192.168.3.156	IPG-8020PSD-FR	ONVIF	192.168.3.156	1	1.1.1-20191206Z1S	-	connected	Default area
<input type="checkbox"/>	192.168.3.63	AHB-8304HGB	P6S	192.168.3.63	4	2.4.2-20191228	6060	connected	Default area

PROMOTE

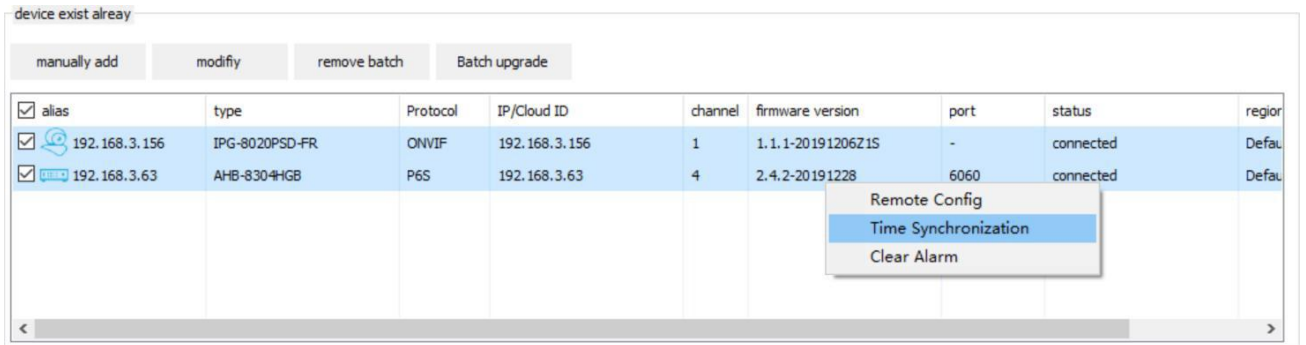
Are you sure delete the selected device?

## 2.2.2.4 Equipment control

You can make various control in equipment management interface, including: time synchronization, reboot, alarm delete and etc.

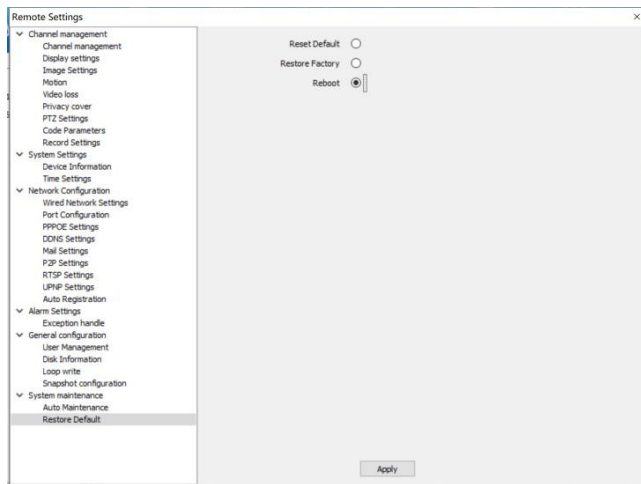
### Time synchronization:

Under Device management > Added device interface, tick the equipment, click **【Time synchronization】** button, you can synchronize the time between device and PC.



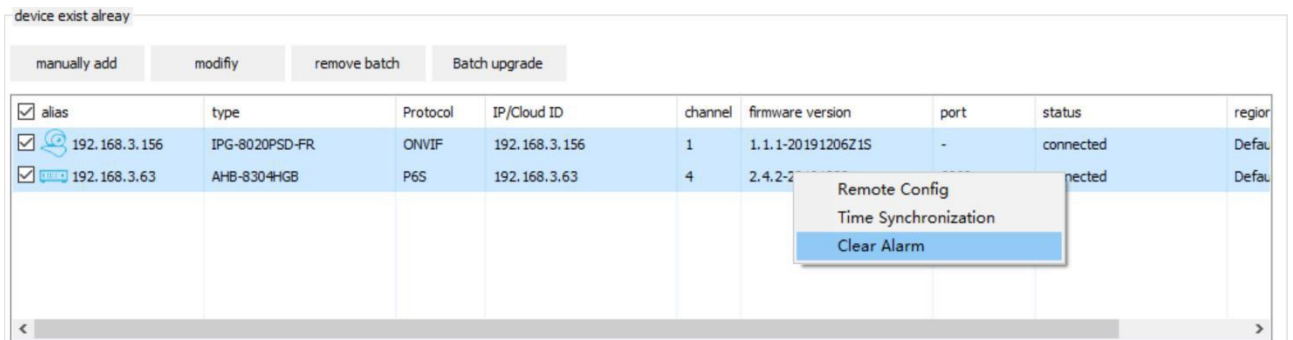
## Equipment reboot:

Under Device management > Added device interface, tick the equipment, click **【Reboot】** button, the device will be restarted directly.



## Remove alarm:

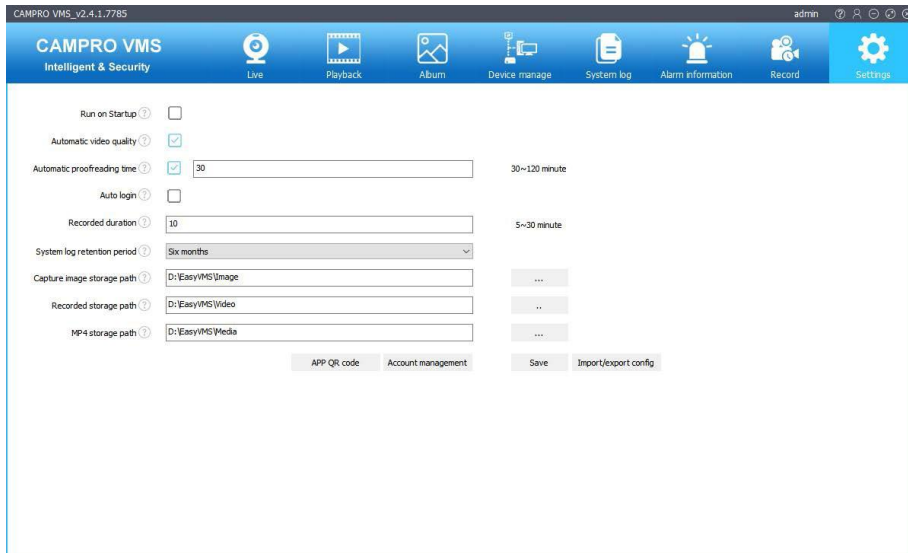
Under Device management > Added device interface, tick the equipment, click **【Remove alarm】** button, you can eliminate alarm from front-end device



## 2.2.3 System setting

### 2.2.3.1. Power boot

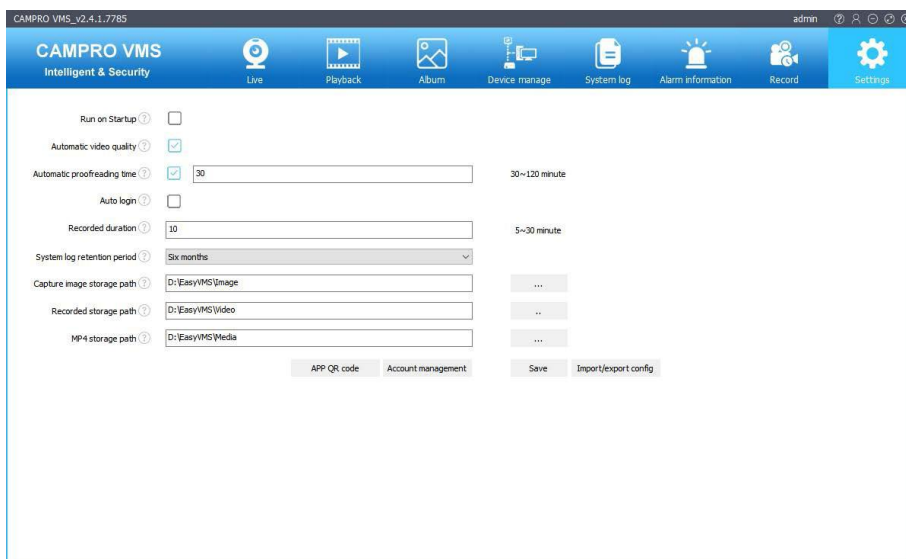
Enter into Setting interface, you can set to start up CAMPRO VMS software automatically. Tick **【Power boot】** button, and saved. CAMPRO VMS will auto start when you boot next time.



### 2.2.3.2. Automatic time correction

Enter into System setting interface, you can set the interval of automatic time correction, tick **【Automatic time correction】** button, input the interval time(like 120).

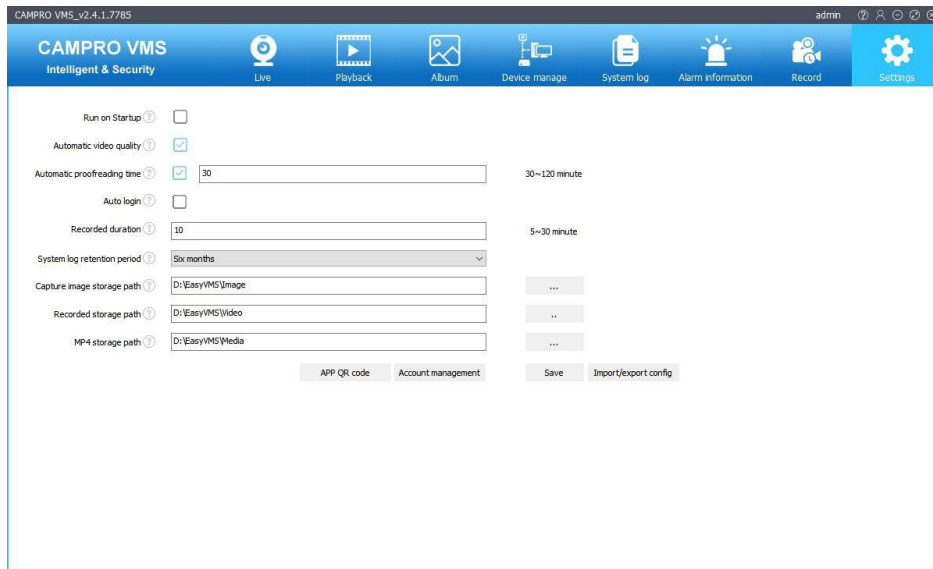
After saved, the device automatically adjust the time every 120 minutes.



### 2.2.3.3. Video duration

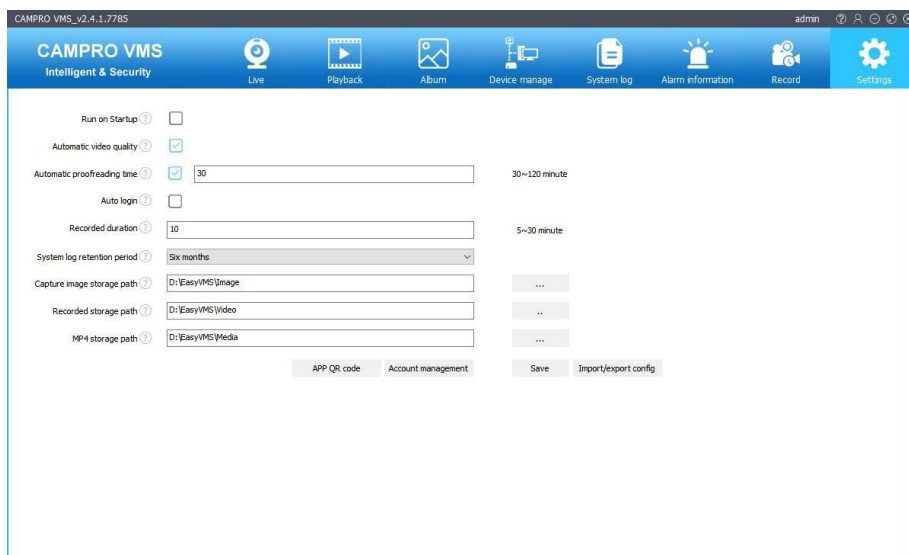
Enter into setting interface, you can set local video duration, choose video time input box, and fill in it(such as 30).

After saved, the interval between each recording is 30min.




### 2.2.3.4. Log length setting

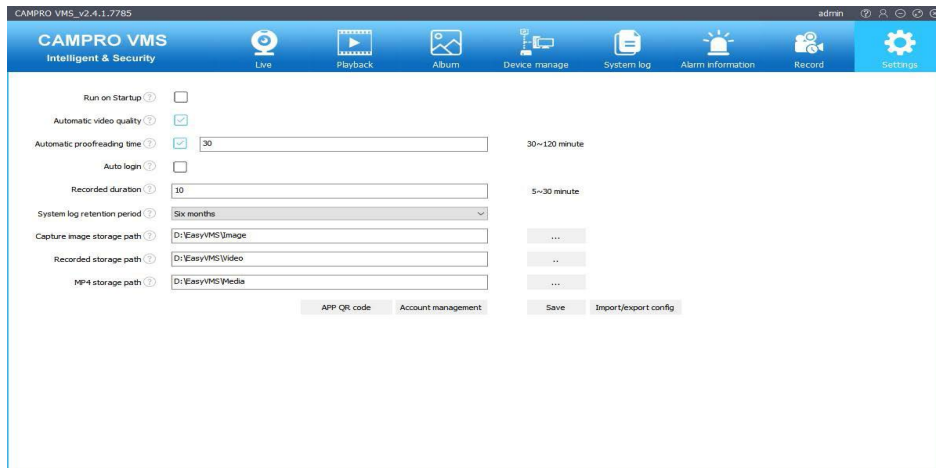
Enter system setting to set Log length. Choose video length (such as 6 months), and save, the Log can be saved for 6 months.



## 2.2.3.5. Snapshot, video saving address setting

Enter system setting to set snapshot and video saving address, click  to choose address, (such as G:\CAMPRO VMS\Image/ G:\CAMPRO VMS\Video).

After saving, the snapshot address is set to G:\CAMPRO VMS\Image, and video address is set to : G:\CAMPRO VMS\Video.

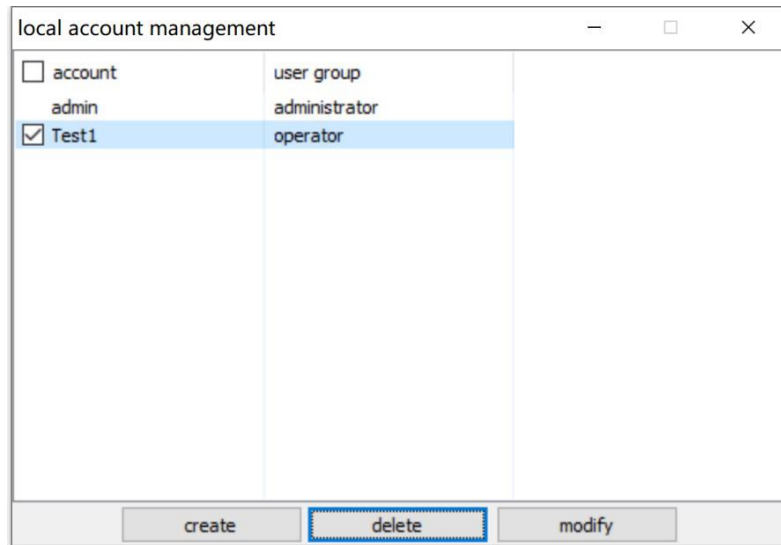


## 2.2.3.6. Account management

Enter system setting to manage local account, including creating operator account, visitor account, changing user password, deleting devices etc.

Click “Account management”, and click “create”, enter new user name, password and user group (such as operator)

After saving, there will be a new user "Test1) in operator group.



Click "account management", and choose operator user Test1, and click "delete". After deleting, the new user account will disappear.

### Currently there are 3 user levels:

Manager: device management, user management, video surveillance, video playback, Log checking, user switch, customer end logout.

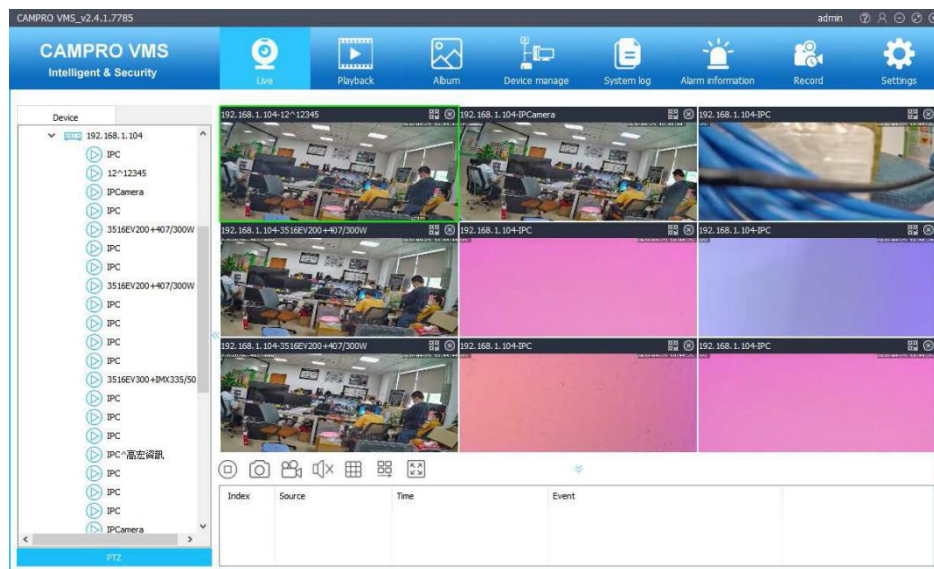
Operator: video surveillance, video playback, Log checking, user switch, customer end logout.

Visitor: video surveillance, user switch, password modification.

## 2.2.4. Real-time preview

### 2.2.4.1. Real-time preview

Click the device name on the left; you can see the preview of the device as below:




To close single channel preview, you can click “stop preview” on the list of the pop-up list of the channel by right click. To close all channel preview, you can choose “close all previews” in preview tool.

### 2.2.4.2. Preview control


In preview operation label page as below:





Icon  is to close all channel previews, click it, all channel preview will be closed.

Icon  is for snapshot, click it, snapshot pictures of this channel will be saved to local address.

Icon  is to open/close all channel video. Click it, videos of all channels will be open or closed.

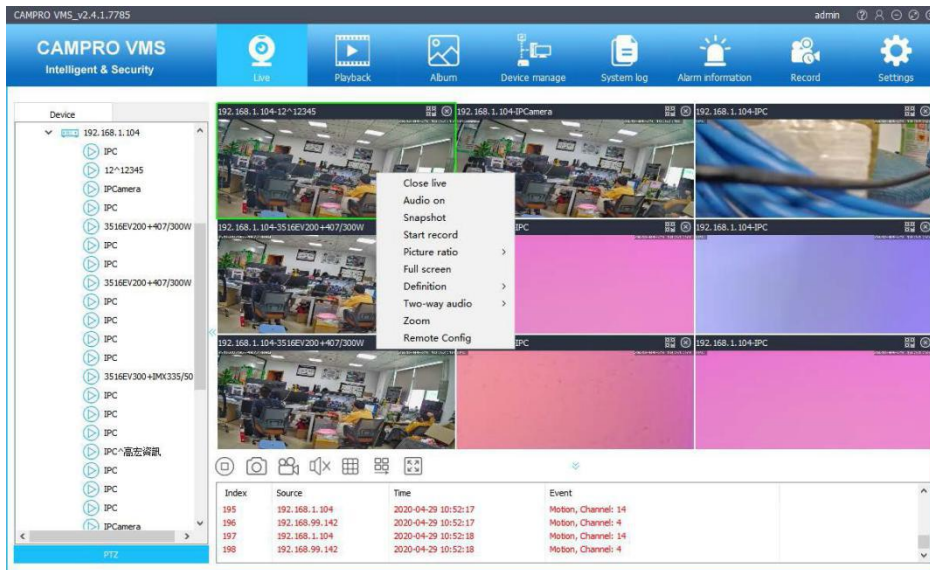
Icon  is to open/close audio, click it, audio of all channels will be open/closed.

Icon  is for split screen. Click it, channels nos can be set. Currently there are single , 4 , 9,16,25,36 and64 screens optional.

Icon  is for full screen switch. Click it can switch to full screen preview. On the bottom of full screen, right click “retrieve full screen”, or ESC on the keyboard, you can retrieve from full screen preview.

### 2.2.4.3. Right click menu control

Choose any channel on the preview interface and right click, a menu will pop up as below:



Click “Stop preview”, current channel preview will be closed.

Click “Open audio”, current channel audio preview can be opened.

Click “Snapshot” to start taking snapshot from current channel and save pictures in local address.

Click “start video” to take video for current channel and save video in local address.

Click “Image ratio” to set the current preview image ratio to original ratio or fill ratio.

Click “Full screen” to change preview image into full screen. It is same as “Full screen” in the “Tools” under the preview operating page.

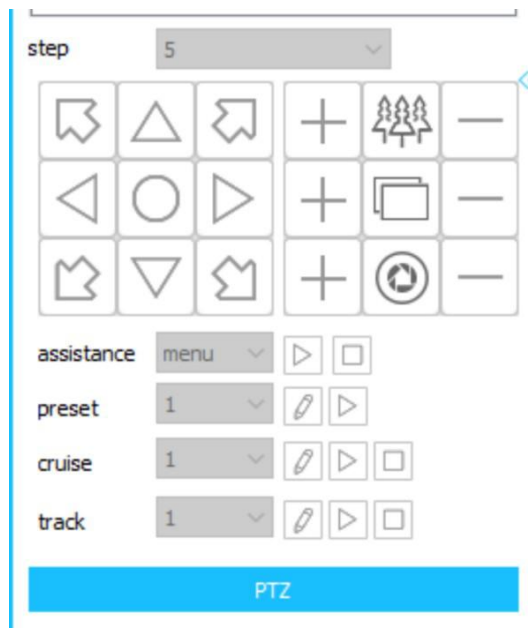
Click “Clarity” to set channel image quality to main stream or sub stream.

Click “Digital zoom” to zoom in in current channel.







## 2.2.4.4. PTZ control

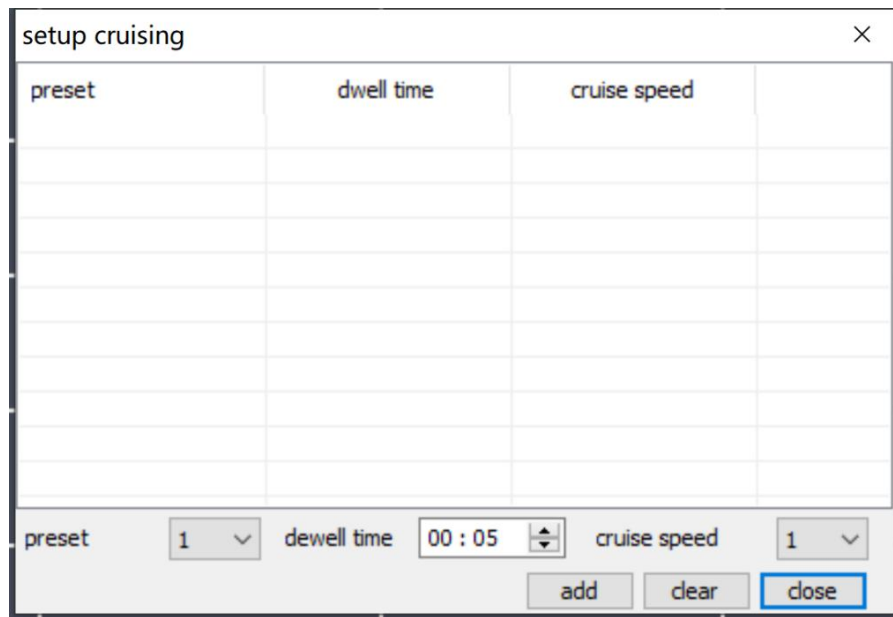
Click preview>lower part of device area >ptz to enter ptz control interface as below:









Users are allowed to control the movements of PTZ cameras in PTZ control windows, including left, right, upward and downward movements of PTZ speed dome camera; zoom in or zoom out the target, adjust focus and iris to get better image quality.

Under the PTZ control panel there are auxiliary functions setting and preview, preset position setting and preview, navigation setting and preview, track setting and preview.

- (1) Auxiliary functions include: light,rain wiper, defrost function. Click relative button for the functions.
- (2) Preset position setting and preview. Choose the serial no of preset position in drop-down list, turn the camera to the preset position you want and click  to set it as preset position. For changing preset position, just move the camera to the position you want, and click  again, the preset position can be refreshed. Choose other serial no in the drop-down list to set other preset positions. Max preset position quantity can be 256. Click preview button  on the right side to move the camera to the preset position of relative serial no.
- (3) Cruise setting and preview. Choose cruise serial no, click  setting button, a setting window will pop up as below. Choose preset position serial no, and set cruise speed and stay time, click “add cruise” to add preset positions to cruise, and click “ok” to save cruise position. Click” clear”, you can delete all the cruise positions.



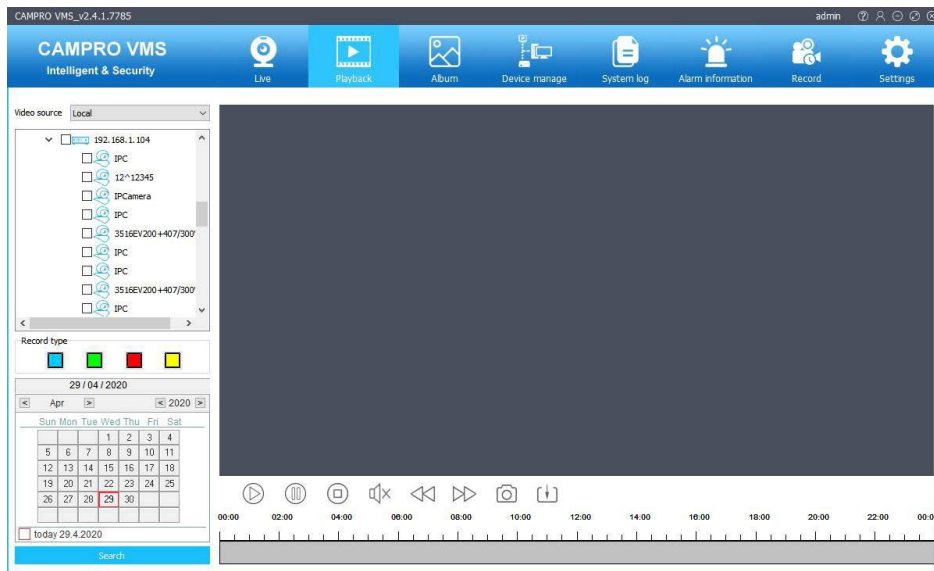
Choose cruise serial no in drop-down list. Click preview button  to start cruise preview; click  to close cruise.

(4) Track setting and preview. Choose track serial no, click  to set track. Move PTZ to set camera track. After setting, click  again to close track memory; click  preview button to start track; click  to close track.

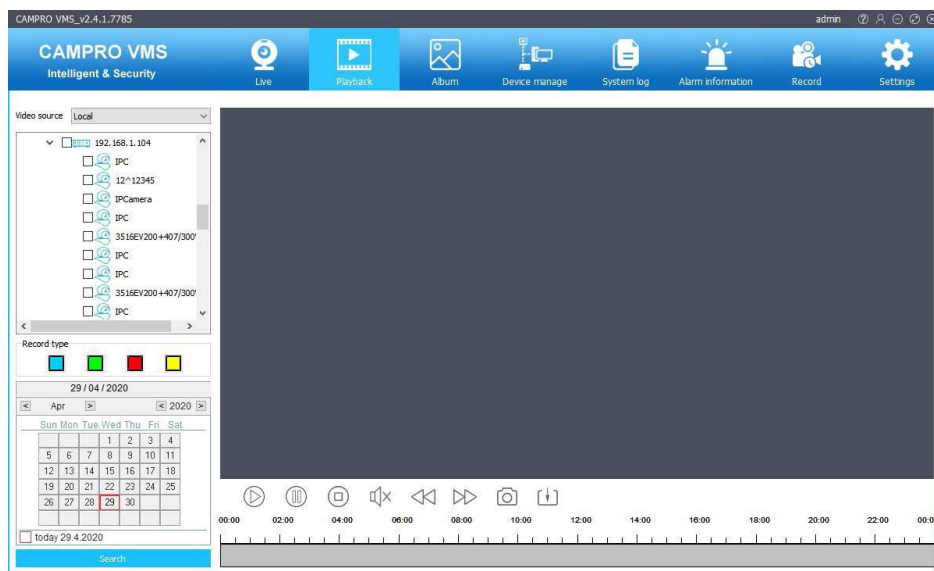
## 2.2.5. Remote playback

### 2.2.5.1. Record search







Press 'remote playback' button, choose the channel on the left(only support one channel playback at one time), choose the time and press 'search', then you will see the playback as below:



### 2.2.5.2. Playback control



1.  play button

2.  pause button
3.  close button
4.  audio on button
5.  play slowly button,  play fast button
6.  screenshot button

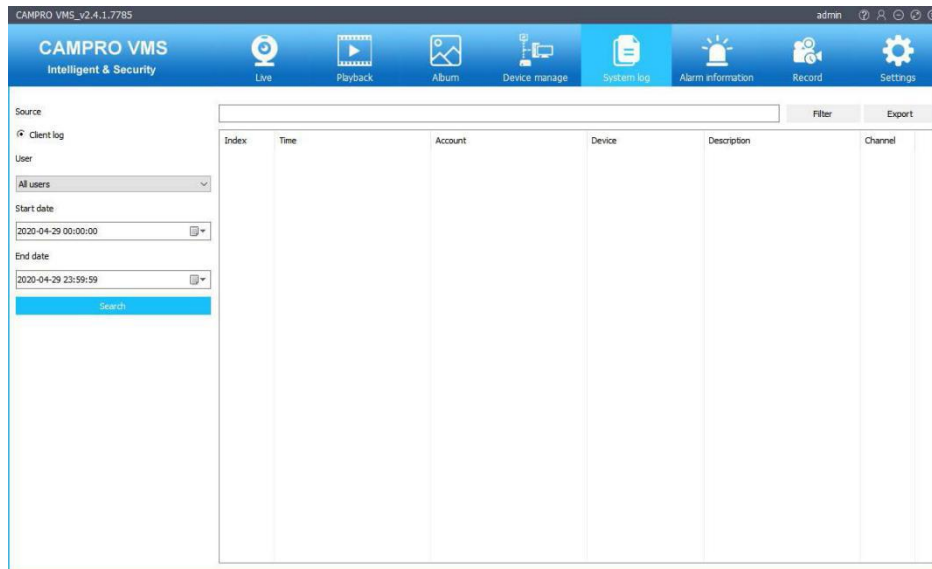
Timeline operation:

1. Timeline is from 0 to 24 o'clock
2. Roll the mouse on timeline can zoom and zoom out timeline
3. click the timeline twice to start playback

## 2.2.6. Log management

### 2.2.6.1 Client log

Enter system log, choose client log, user, start date and end date, press search, then you will see the operation log:



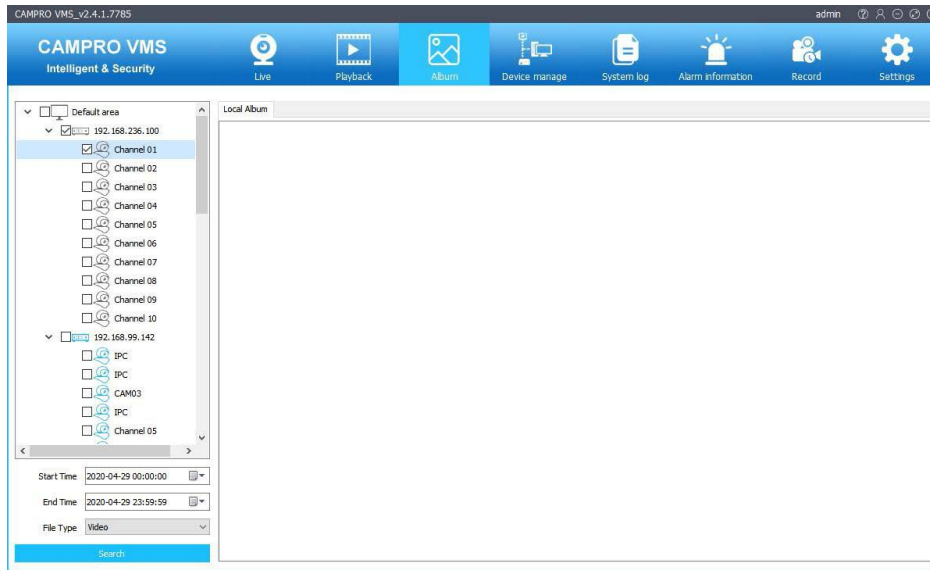
Press export button, can save operation log as .csv file.

## 2.2.7 Album

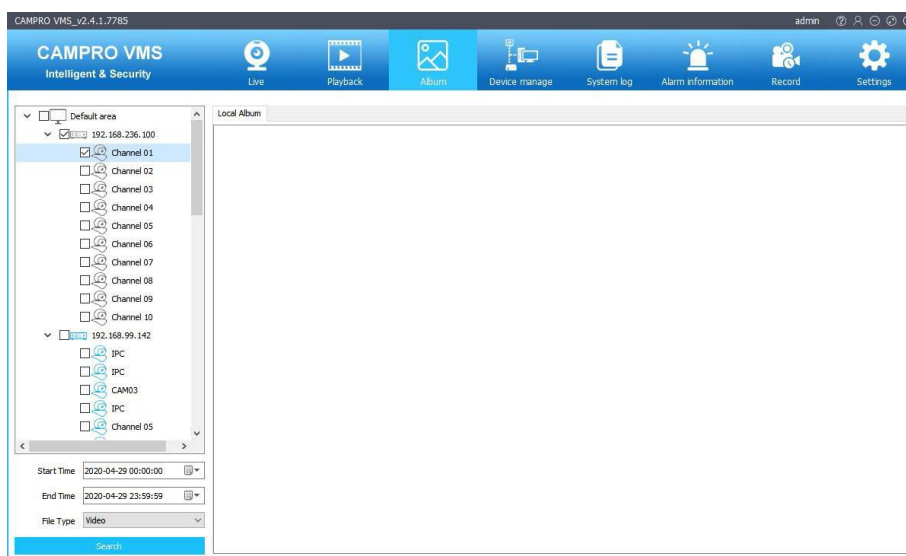
Album is mainly for the management of local snapshot and record file. Users can search, check and delete by different types.

### 2.2.7.1 Filter search

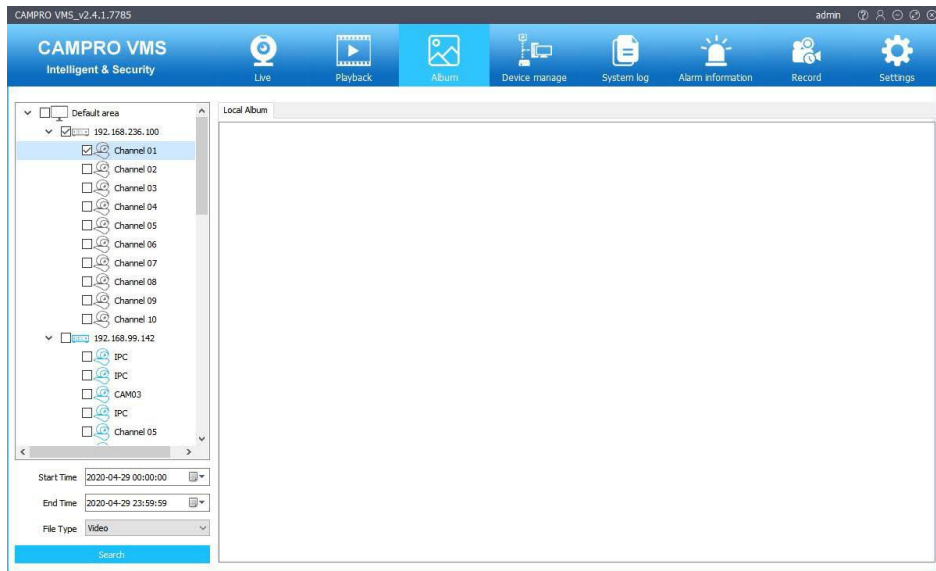
Search by devices: choose device and search local picture and record of the device:



Search by date:



Search by media type:



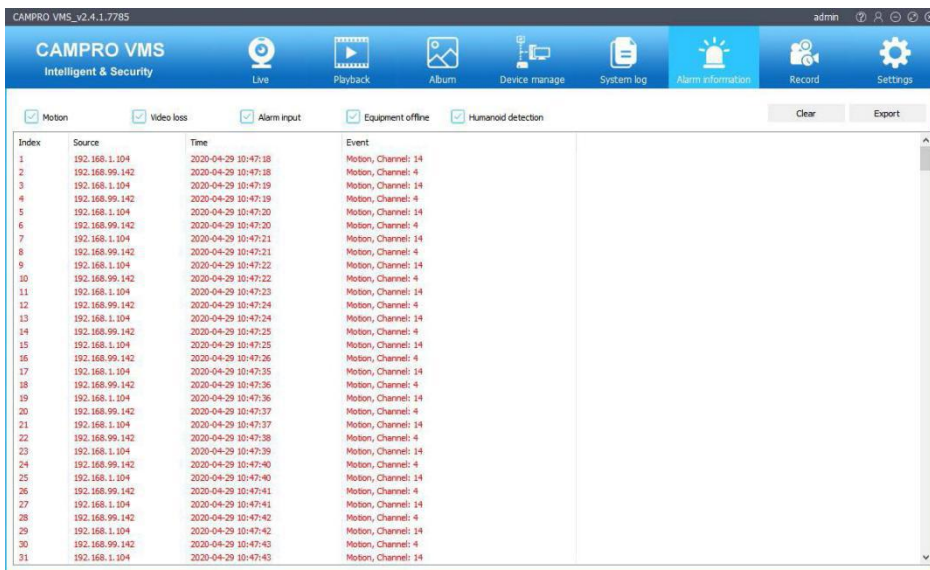
We can also delete or jump to target to play the videos and pictures, right click the file and choose.

## 2.2.8. Alarm information

You can choose the alarm information about motion detection, video loss or alarm input; Users can also view and export to backup the alarm information.

### 2.2.8.1 View Alarm information

Choose the checked alarm information types (for example, only for video loss, alarm input), view all type alarm information



Index	Source	Time	Event
1	192.168.1.104	2020-04-29 10:47:18	Motion, Channel: 14
2	192.168.99.142	2020-04-29 10:47:18	Motion, Channel: 4
3	192.168.1.104	2020-04-29 10:47:19	Motion, Channel: 14
4	192.168.99.142	2020-04-29 10:47:19	Motion, Channel: 4
5	192.168.1.104	2020-04-29 10:47:20	Motion, Channel: 14
6	192.168.99.142	2020-04-29 10:47:20	Motion, Channel: 4
7	192.168.1.104	2020-04-29 10:47:21	Motion, Channel: 14
8	192.168.99.142	2020-04-29 10:47:21	Motion, Channel: 4
9	192.168.1.104	2020-04-29 10:47:22	Motion, Channel: 14
10	192.168.99.142	2020-04-29 10:47:22	Motion, Channel: 4
11	192.168.1.104	2020-04-29 10:47:23	Motion, Channel: 14
12	192.168.99.142	2020-04-29 10:47:24	Motion, Channel: 4
13	192.168.1.104	2020-04-29 10:47:24	Motion, Channel: 14
14	192.168.99.142	2020-04-29 10:47:25	Motion, Channel: 4
15	192.168.1.104	2020-04-29 10:47:25	Motion, Channel: 14
16	192.168.99.142	2020-04-29 10:47:26	Motion, Channel: 4
17	192.168.1.104	2020-04-29 10:47:26	Motion, Channel: 14
18	192.168.99.142	2020-04-29 10:47:26	Motion, Channel: 4
19	192.168.1.104	2020-04-29 10:47:26	Motion, Channel: 14
20	192.168.99.142	2020-04-29 10:47:27	Motion, Channel: 4
21	192.168.1.104	2020-04-29 10:47:27	Motion, Channel: 14
22	192.168.99.142	2020-04-29 10:47:28	Motion, Channel: 4
23	192.168.1.104	2020-04-29 10:47:29	Motion, Channel: 14
24	192.168.99.142	2020-04-29 10:47:30	Motion, Channel: 4
25	192.168.1.104	2020-04-29 10:47:30	Motion, Channel: 14
26	192.168.99.142	2020-04-29 10:47:41	Motion, Channel: 4
27	192.168.1.104	2020-04-29 10:47:41	Motion, Channel: 14
28	192.168.99.142	2020-04-29 10:47:42	Motion, Channel: 4
29	192.168.1.104	2020-04-29 10:47:42	Motion, Channel: 14
30	192.168.99.142	2020-04-29 10:47:43	Motion, Channel: 4
31	192.168.1.104	2020-04-29 10:47:43	Motion, Channel: 14

### 2.2.8.2 Alarm information export

Press export button and save the information to local