

# CB-NVD-6404

## User Manual

1	<b>Software Installation</b> .....	- 2 -
1.1	Install Campro CMS.....	- 2 -
2	<b>Quick Guide</b> .....	5
2.1	The Client Login.....	错误！未定义书签。
2.2	Home Page Introduction.....	错误！未定义书签。
2.3	Device Management.....	6
2.3.1	Add Device.....	错误！未定义书签。
2.3.2	Delect and Modify Device.....	8
2.4	TV Wall Configuration.....	9
2.4.1	Add Decoder.....	错误！未定义书签。
2.4.2	Add TVL.....	12
2.4.3	Modify TV Wall.....	15
2.4.4	Delect TV Wall.....	错误！未定义书签。
3	<b>Video Surveillance</b> .....	16
3.1	TV Wall Control.....	错误！未定义书签。
3.2	Decoding to TV Wall.....	16
3.2.1	Drag Surveillance video to TV Wall.....	16
3.2.2	Add Tour Plan to TV wall.....	17
3.2.3	Add Local Video Source to TV Wall.....	21
3.2.4	Alarm linkage to TV Wall.....	22
4	<b>Parameter Configuration</b> .....	23
4.1	Reset Pass Word.....	23
4.2	Output Resolution Setting.....	23

## 1.1 Install CAMPRO CMS

Below shows detailed installation procedure of CAMPRO CMS:

Step 1: Double click CAMPRO CMS\_V1.1.2 Trial.exe to install this program;

Step2: Complete the installation following the guide, click **【Next】** , see Figure 1-1

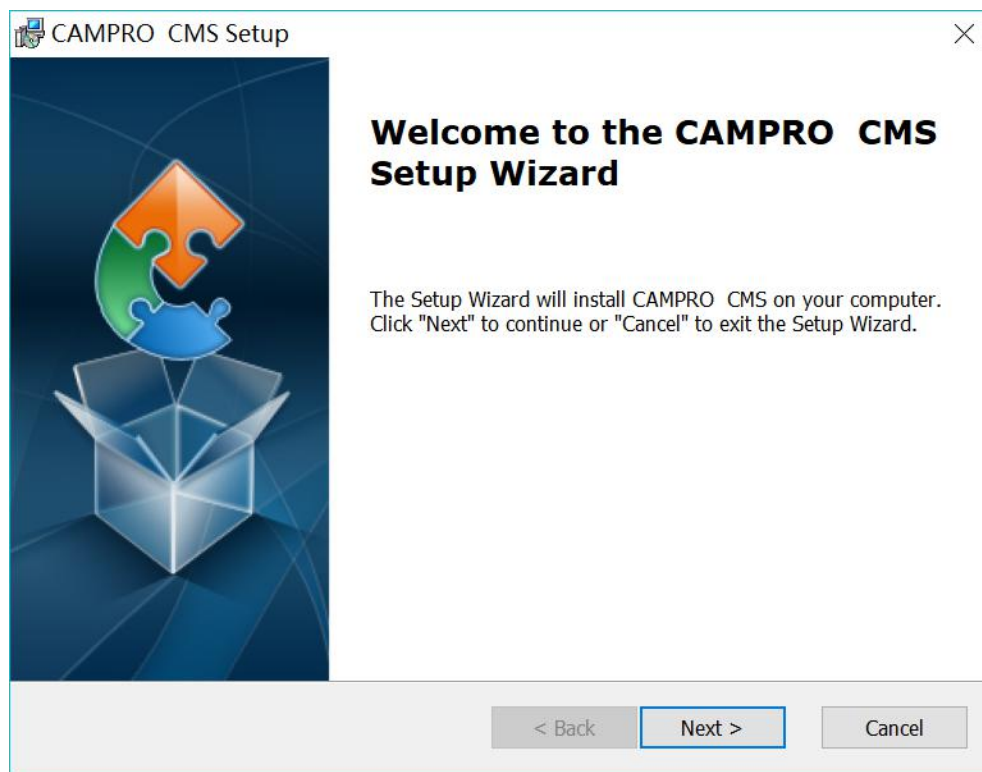


Figure1- 1

Step 3: Select installation path, the default path is: C:\Program Files\CAMPRO CMS , then click **【Next】** , see Figure1 -2:

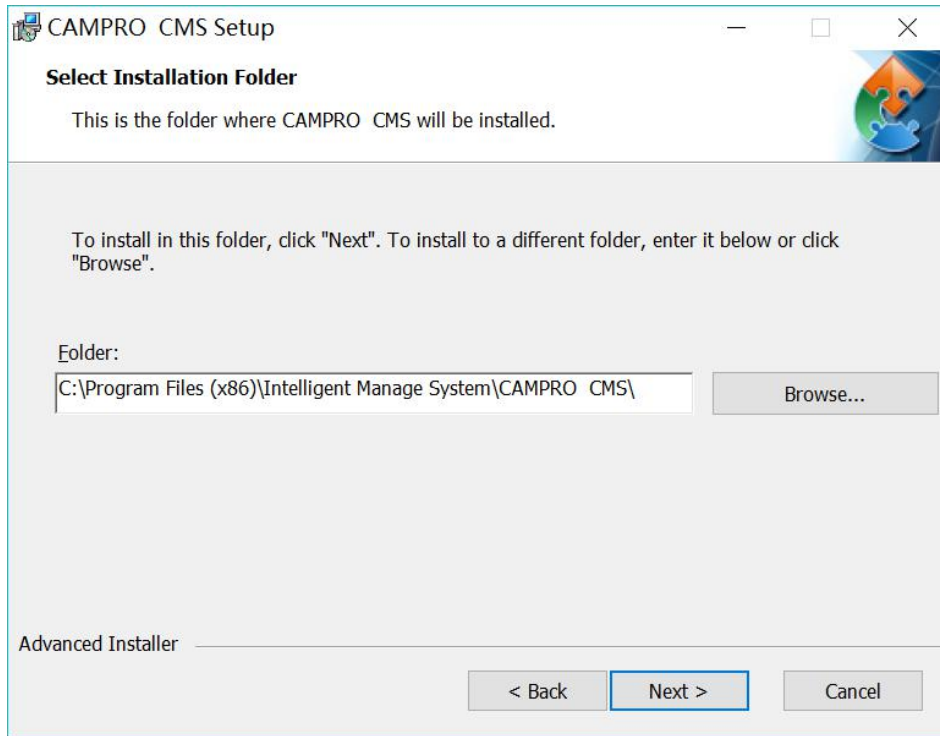


Figure1-2

Step 4: Click **【Install】** , see Figure 1-3:

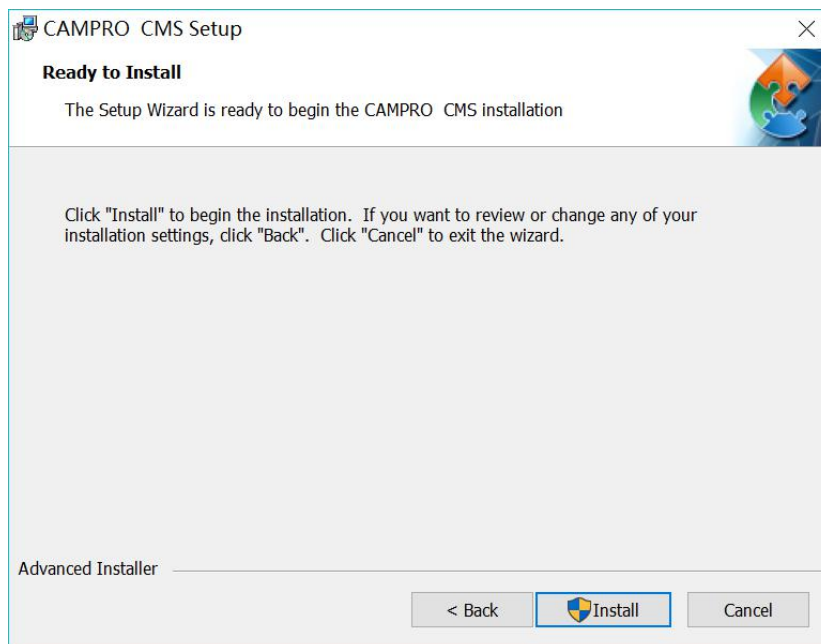


Figure1-3

Step 5: Click **【Finish】** , see Figure 1-4: the installation is complete. As shown in Figure 1-4

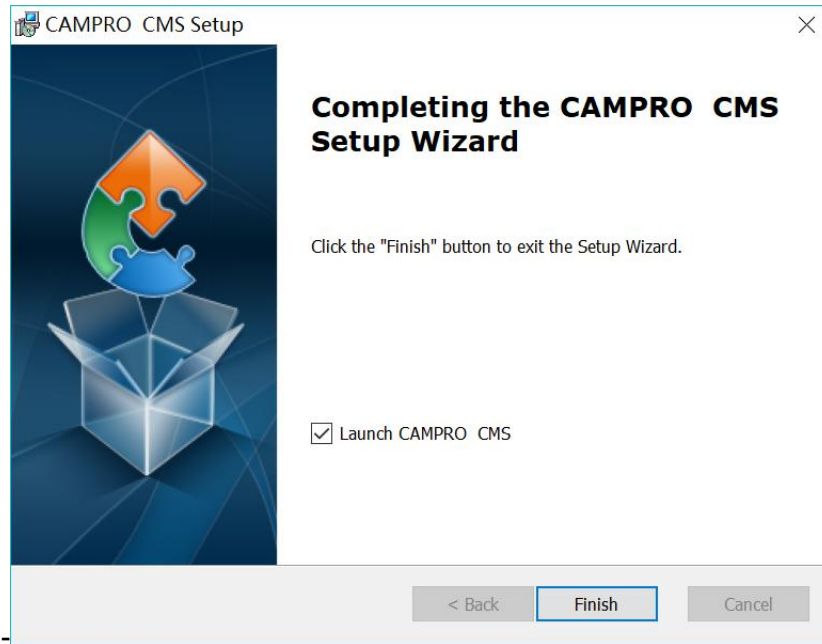


Figure1-4

## 2-1 The Client Log in



Double-click to run it, open login page, as shown in figure 2-1. Input Username and password, Click **【Login】** to log into the client.

A screenshot of the CAMPRO CMS login interface. The window title is 'CAMPRO CMS' with the subtitle 'Intelligent&Security'. The login form includes a 'Username:' field with 'admin' entered, a 'Password:' field with six dots, and two checkboxes: 'Save Password' (checked) and 'Auto Login' (unchecked). A blue 'Login' button is at the bottom.

Figure 2- 1 Log in CAMPRO CMS

Check **【Save password】** and **【Auto login】** , it will log in current user next time by default.

## 2-2 Home Page Introduction

Clients homepage as shown in figure 2-6, it can be divided into sub-window area, business logic, alarm statistics, tool sets, alarm event.

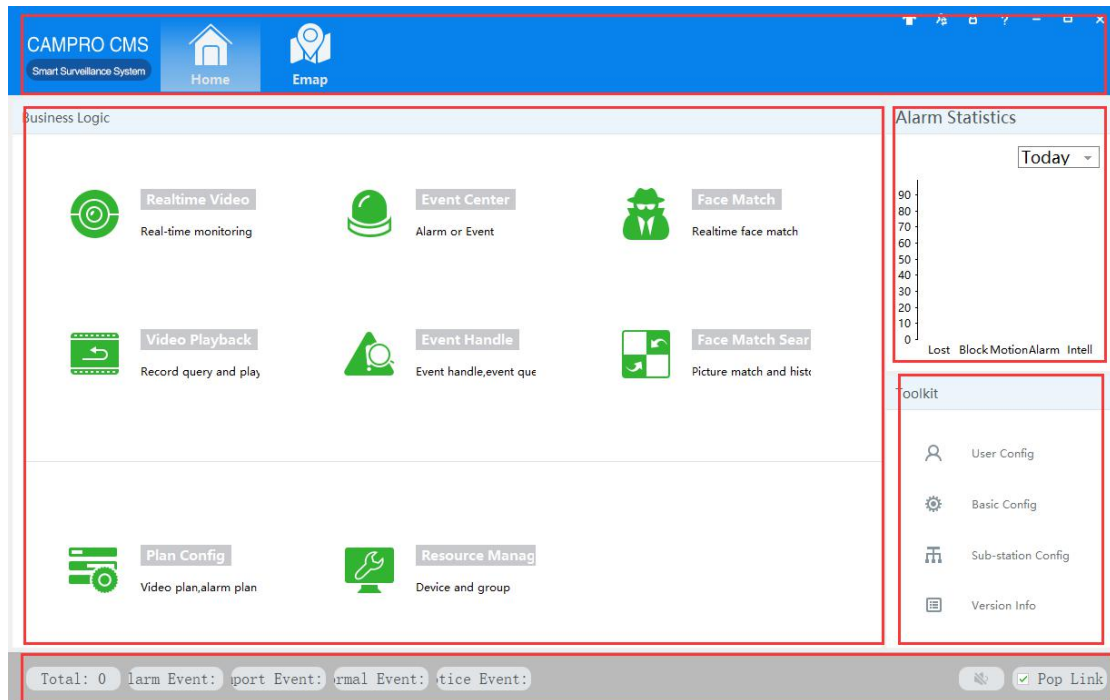







Figure 2-2 CAMPRO CMS Main Interface

- Click  in right corner interface, switch to another user logged on to the client,
- Click  in right corner interface, lock the screen. After locking the screen, not able to operate the client. To unlock, need to be in [the screen is locked, enter the current user name and password to unlock] enter the current username and password in the prompt box to unlock,
- Click  in right corner interface, client interface can be minimized interface display,
- Click  in right corner interface, client interface can be displayed in full screen,
- Click  in right corner interface, be able to exit the client.

## 2-3 Device Management

### 2.3.1 Add Device

For the first time using the software, it is needed to add a device. Device online column shows all online device of current LAN.

Method 1: (1) Click **【Resource Management】** → **【Add Device】** , As shown in figure 2-3:

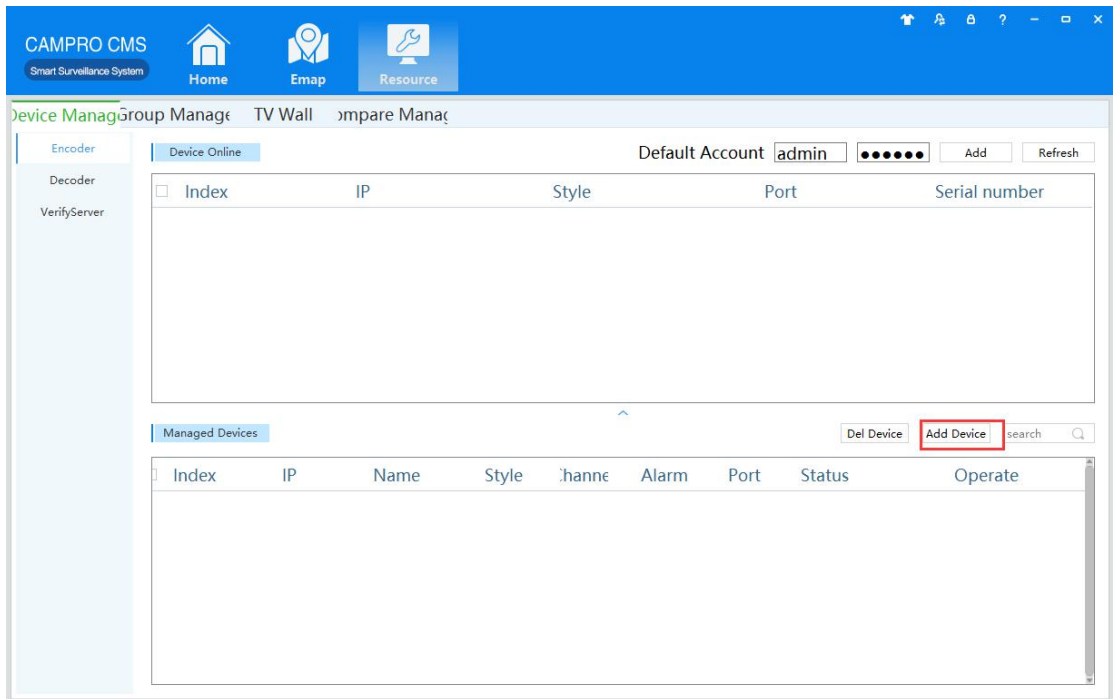


Figure 2-3 Device Management

(2) Complete device information, then click **【Save and Continue】** or **【Save】**, then can see the device in the Managed Devices column. see “Figure 2-4”:

Figure 2-4 Device Information

Method 2: (1) Click **【Resource】** → **【Refresh】** , see “Figure 2-5”:

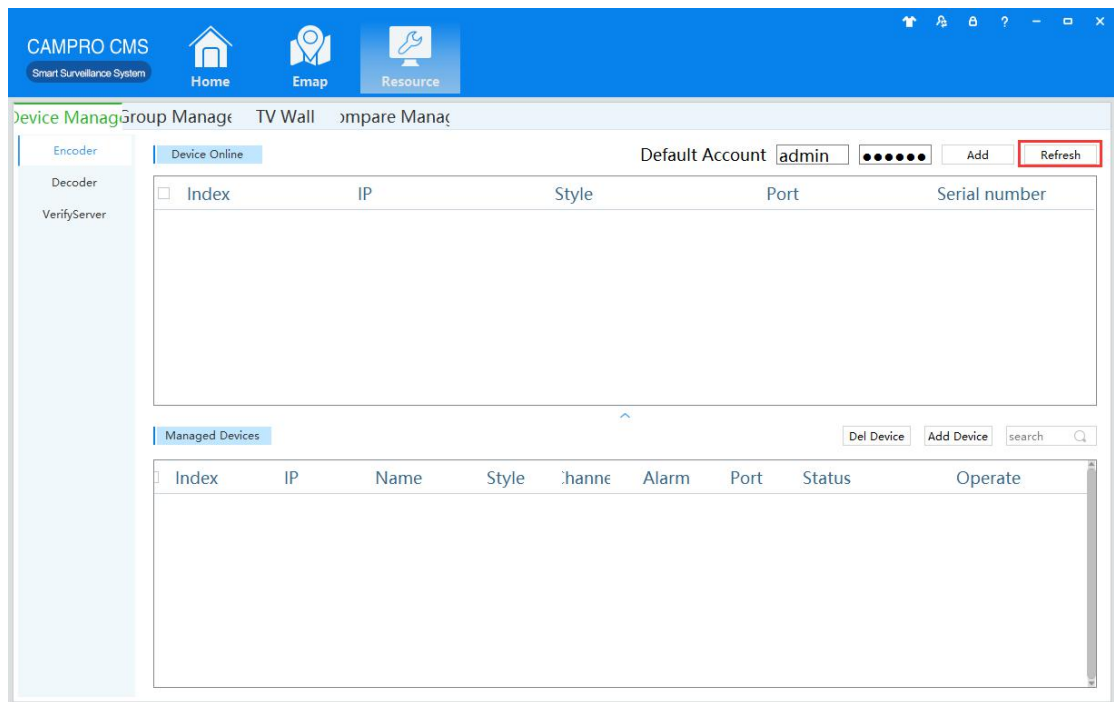


Figure 2-5 Managed Devices

(2) Complete the previous operation, the online device will show in the Device Online, select device you wanna to add, then click **【Add】** , you will see added device in the Managed Devices, see “Figure 2-6”:

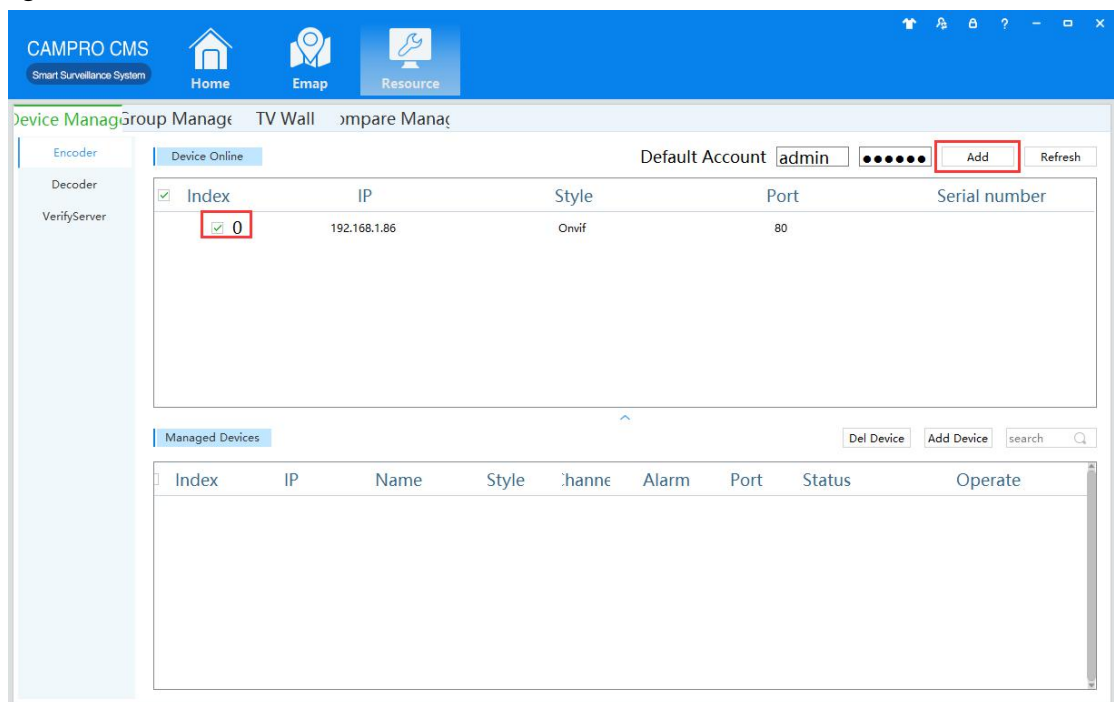




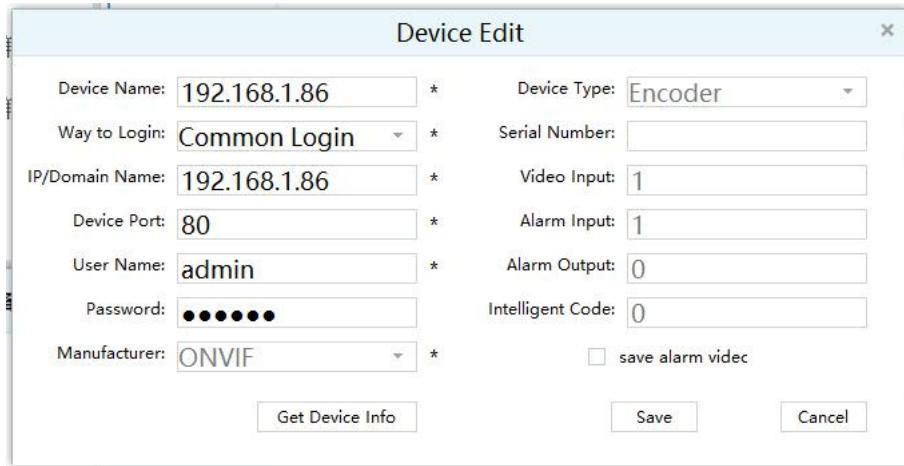
Figure 2-6 Managed Devices



## 2.3.2 Delect and Modify Device

In **【Managed Devices】** choose the added device, then click , can delect the device.

In **【Managed Devices】** choose the added device, then click , can modify the device. see figure 3-7:



Device Name:	192.168.1.86 *	Device Type:	Encoder
Way to Login:	Common Login *	Serial Number:	
IP/Domain Name:	192.168.1.86 *	Video Input:	1
Device Port:	80 *	Alarm Input:	1
User Name:	admin *	Alarm Output:	0
Password:	●●●●●●	Intelligent Code:	0
Manufacturer:	ONVIF *	<input type="checkbox"/> save alarm videc	

Buttons: Get Device Info, Save, Cancel

Figure 2-7 Add the device's network parameter

On this interface, user can change the device's parameter, like device's name, login type, device IP, device port, username, password and manufacturer etc. Then input administrator's password, and click Save to finish the parameter adding.

## 2-4 TV Wall Configuration

### 2.4.1 Add NVD

In **【Resource management】** click **【device management】** , select the "Decoder" class. As shown in Figure 2-8.

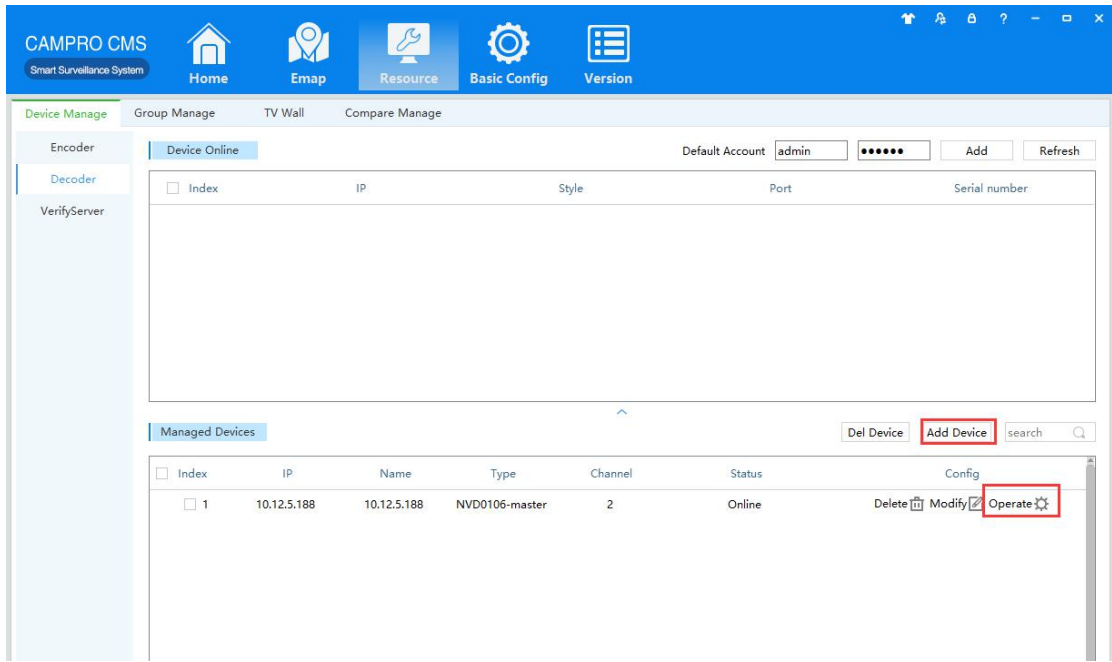


Figure 2-8 Add NVD

Note: If you want to add NVD-XXXX, you can refer to the above encoder device types, below introduces decoder model NVD-XXXX added.

Step 1: the encoder can be added with equipment similar to manually or automatically add a device as the master to the list of managed devices, (managed devices in the list to display only as a master device).

Step 2: click on the device and operation buttons, pop-up configuration window, you can configure the master node, as shown in Figure 2-9:

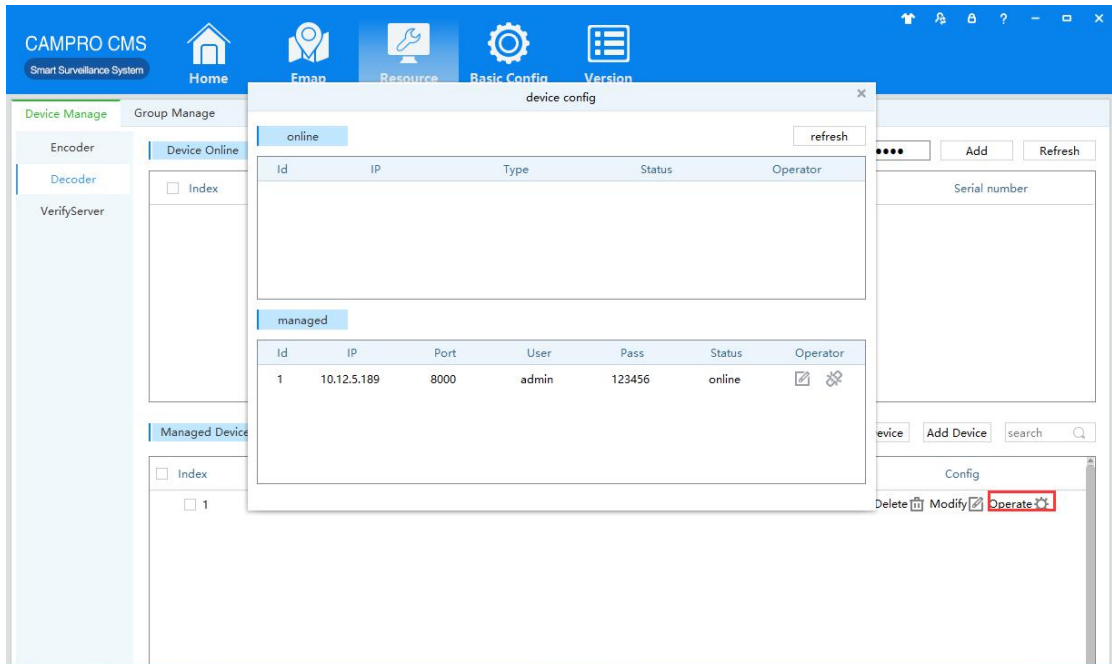


Figure 2-9 Decoder Device Configuration

Step 3: in online equipment list displays the current devices can be added as a child node in the network, click on the link button of the device to add it as a child node, as shown in Figure 2-10:

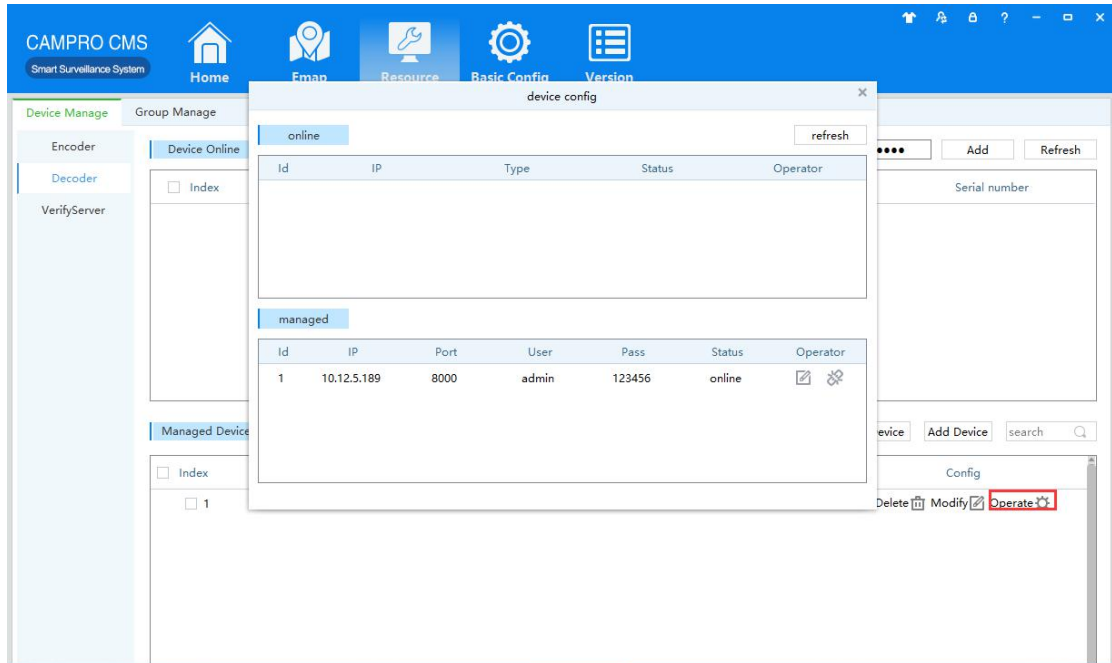


Figure 2-10 Decoder Device Configuration

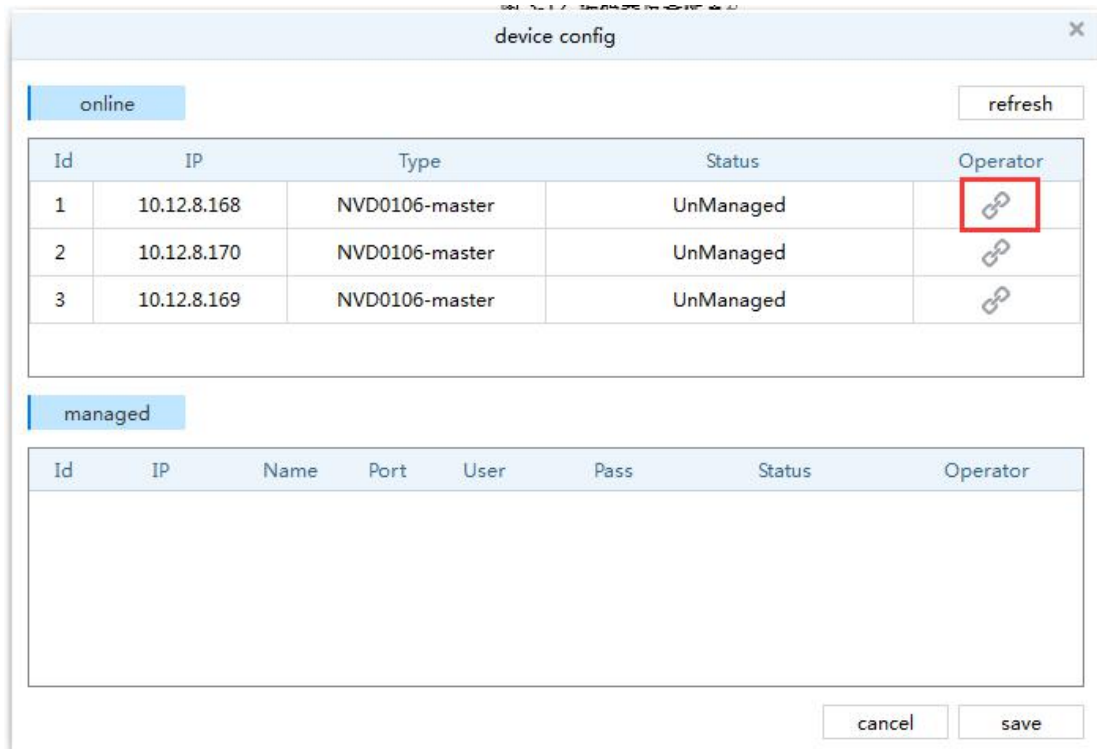


Figure 2-11 The Associated Child Nodes

Step 4: Management in the device list, select Modify to make changes to the device information, click on the Cancel button that is associated, can cancel the associated node:

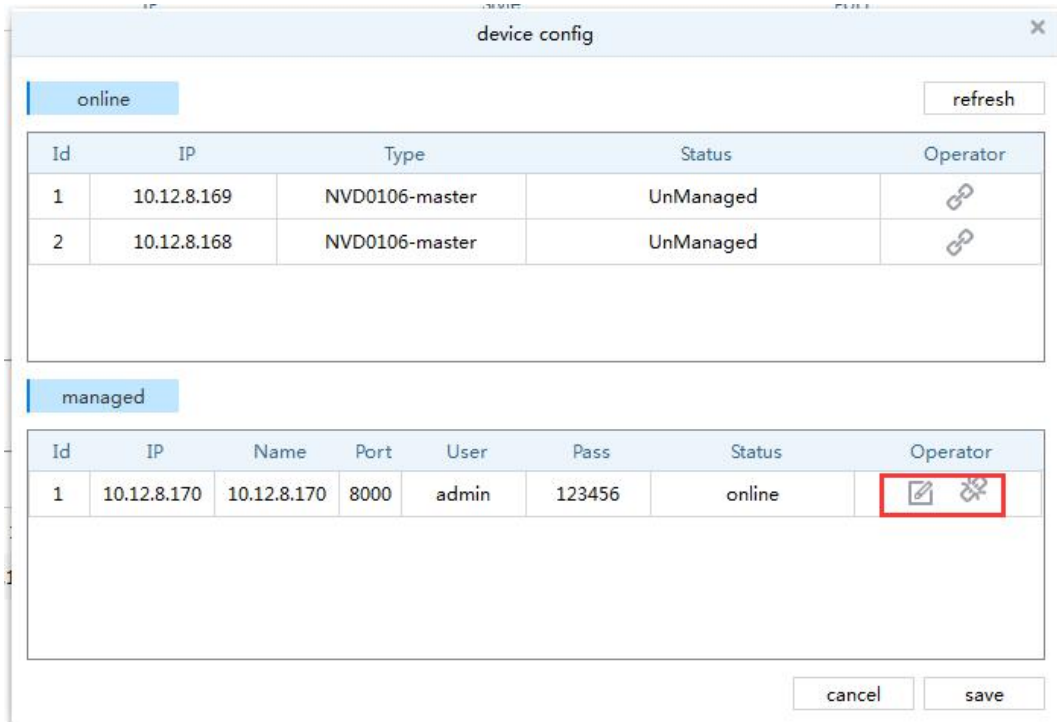


Figure 2-12 Associated child nodes changes and cancellations

Step 5: click the Save button to complete the node configuration.

## 2.4.2 Add TV Wall

According to the user needs to create a new TV wall, specify decoder channel logical mapping with the physical display.

In 【Resource】 management] click 【TV Wall】 enter the video wall configuration interface. Figure 2-13 shows.

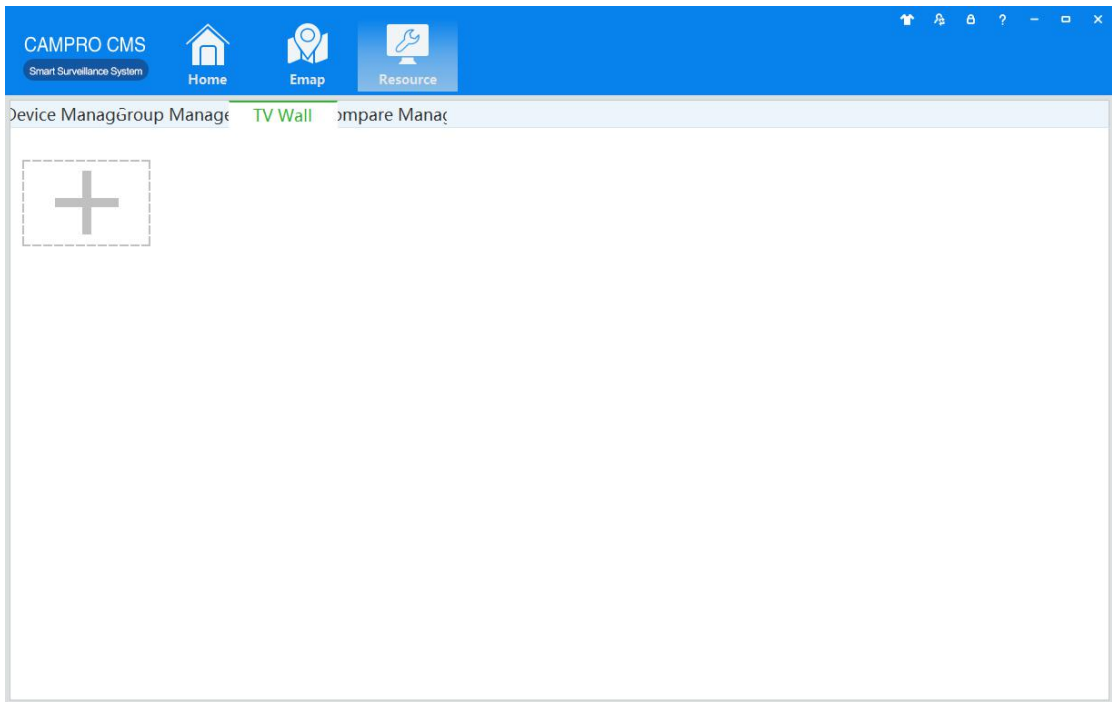



Figure 2-13 TV Wall Configuration Interface

Add TV Wall concrete steps are as follows:

Step 1: click on the TV Wall configuration interface  And add pop-up TV Wall interface, as shown in Figure 2-14 is shown:;

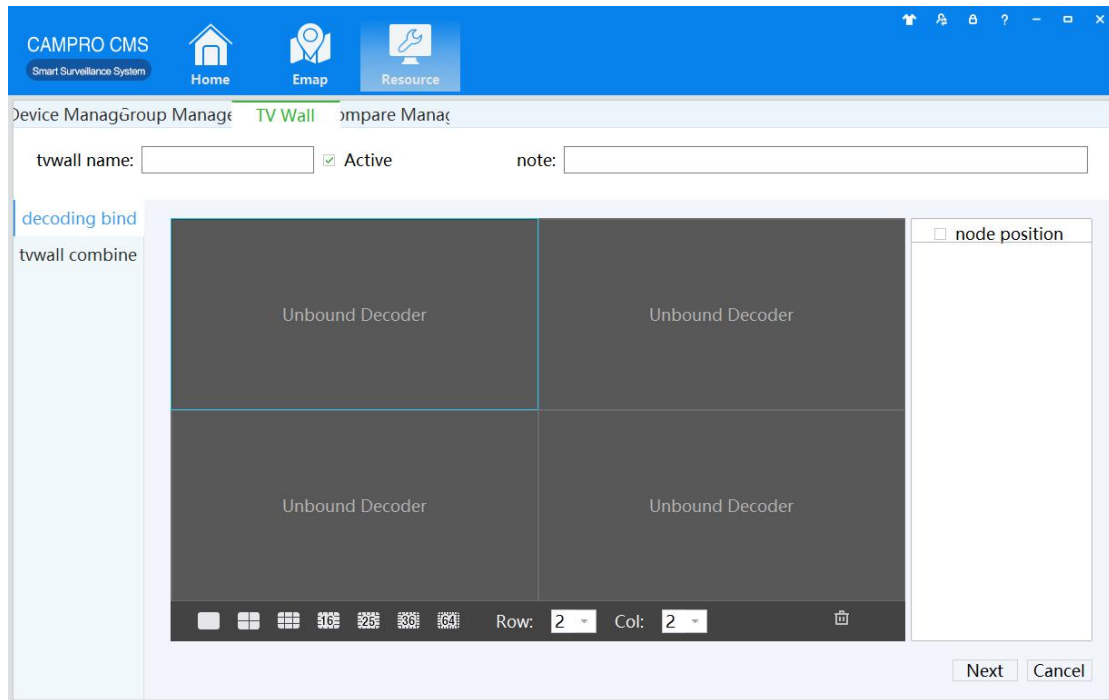


Figure 2-14 New TV Wall -step1

Step 2: naming TV wall, and check the enable, select screen layout based on physical screen layout;

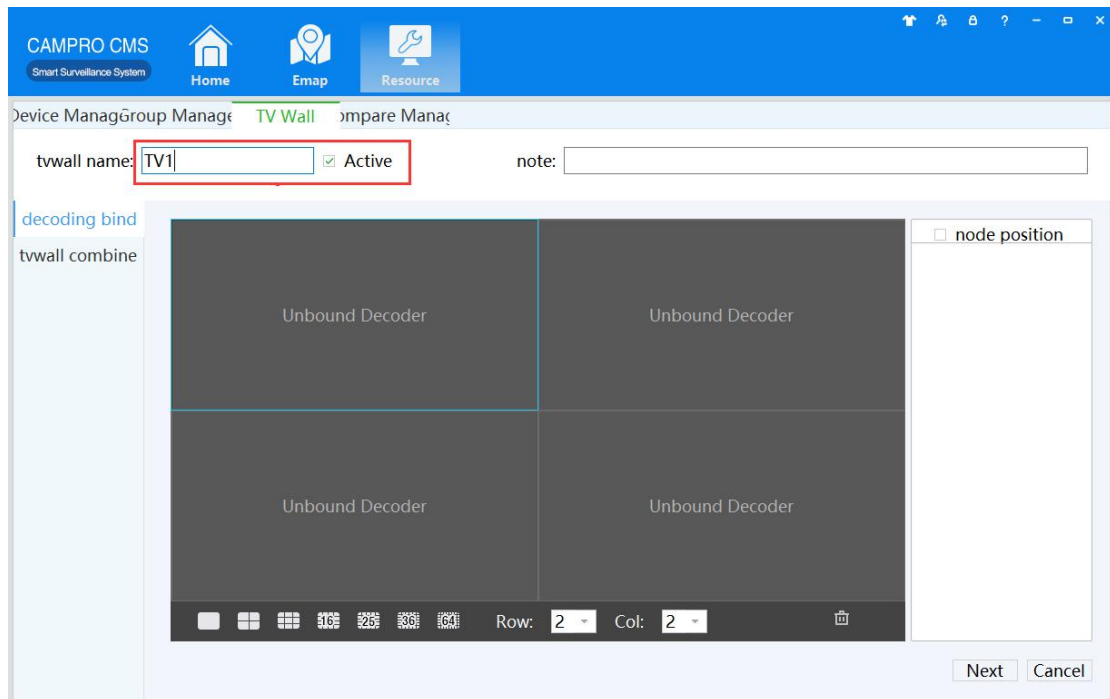


Figure 2-15 New TV Wall –step2

Step 3: Click the 【location】 , large screen real decoder and screen physical connection, by physical connection, select Decoder decoder response in the list, drag the mouse to the corresponding screen, complete the mapping relations;

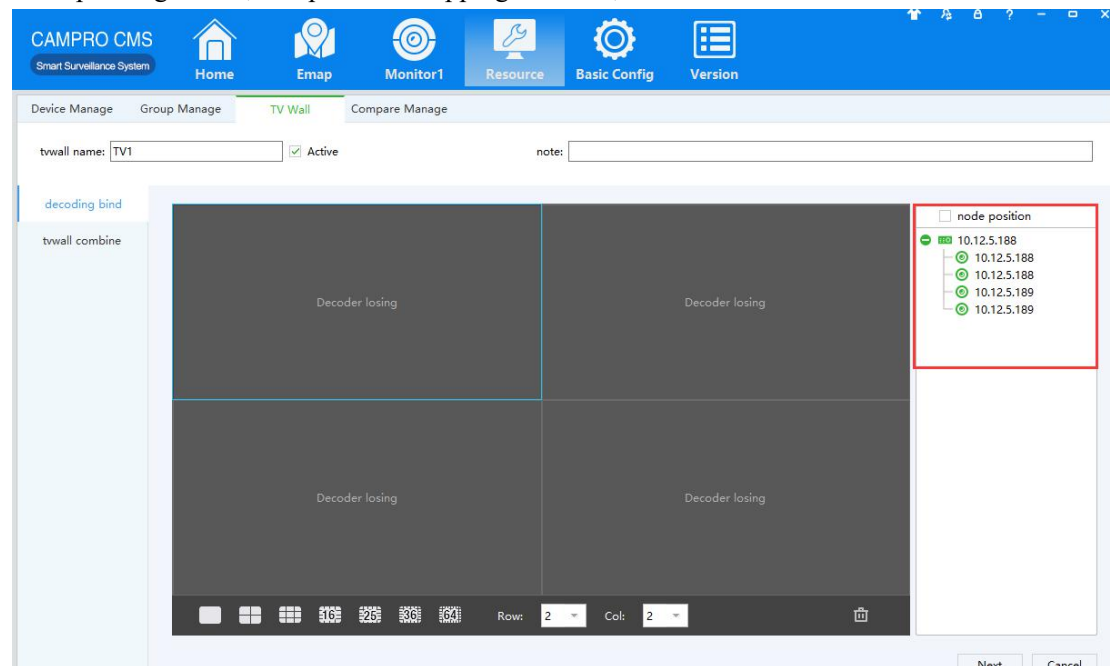




Figure 2-16 New TV Wall –step3

Step 4: click **【next】**, the left mouse button and drag the select adjacent physical screen, select  physical screen into a virtual concatenation of adjacent screen select mosaic screen, you can click on  split screen splicing;

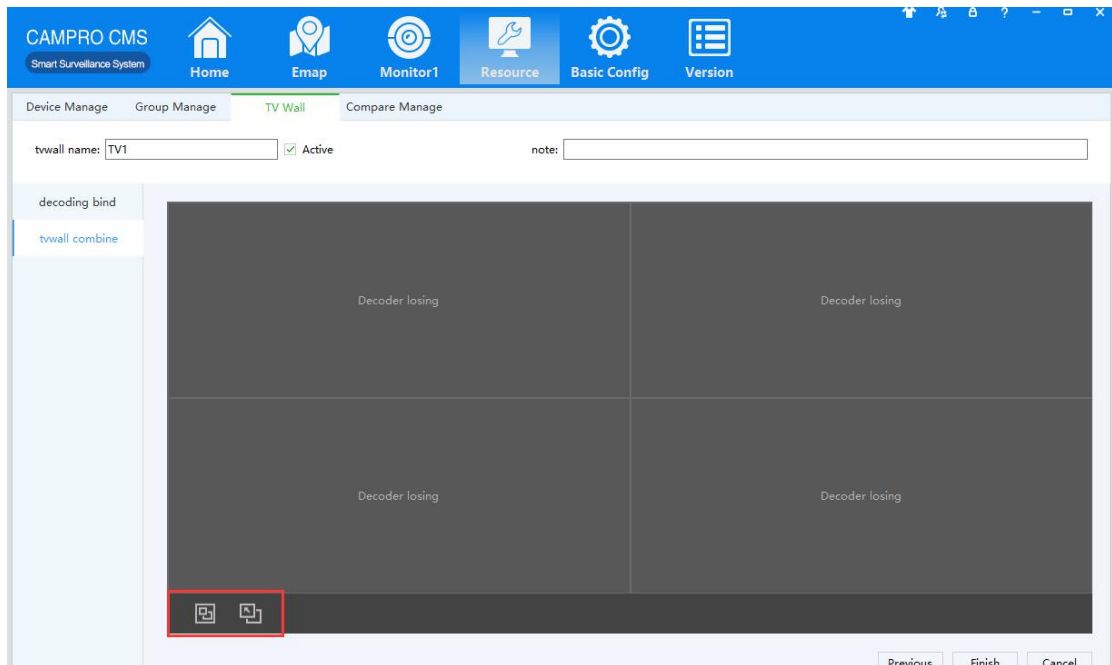




Figure 2-17 New TV Wall –step4

Step 5: click **【Finish】** to complete video wall configuration.

## 2.4.3 Modify TV Wall

Click on the icon of TV Wall interface , enter the TV wall modified interface, added revisions.

## 2.4.4 Remove TV Wall

Click  "Delete existing video wall.

## 3-1 TV Wall Control

Real-time monitor, click the workspace selection drop down menu, select "extended screen", enter the TV Wall Control interface. Video wall operation logic equivalent local real-time preview.

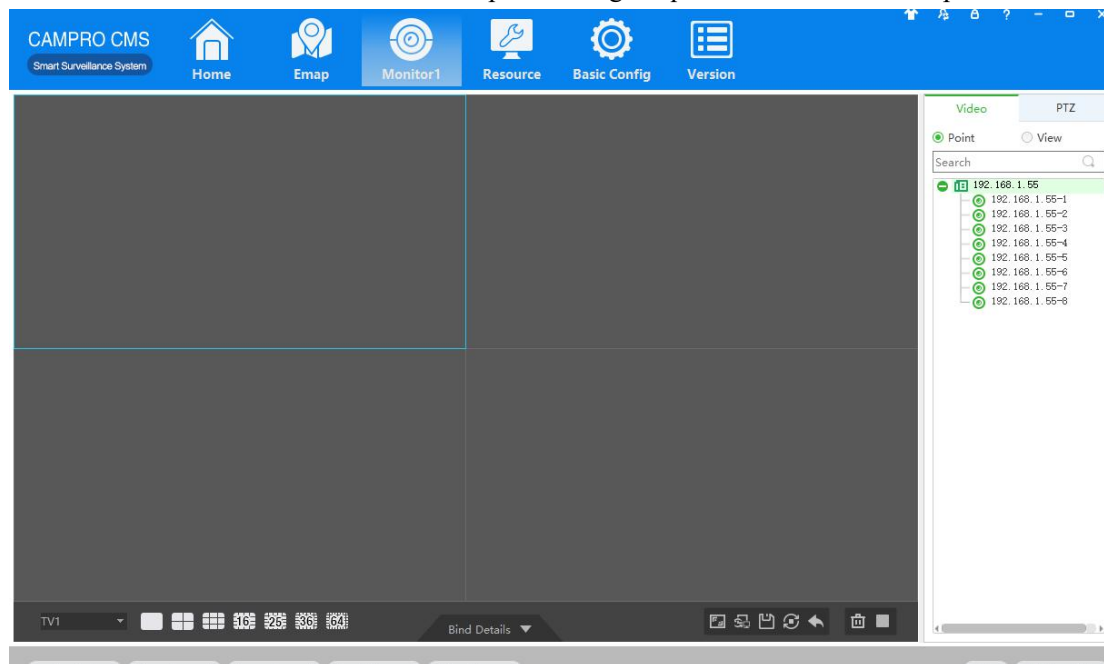


Figure 3-1 TV Wall Control

## 3-2 Add Video to TV Wall

### 3.2.1 Drag surveillance video to TV Wall

Steps show as below:

Step 1: click **【 Realtime Monitor 】** in business logic area, the system will show the realtime monitor interface;

Step 2: In the device list at the right side of interface, choose the channel and drag to video window; The added encoder moves into the position of the created window. The window that has added the video source shows that "N video sources have been bound". At the same time, if the same window is dragged into more than video sources, the default 20S time interval will be used to round patrol See below figure 3-2.



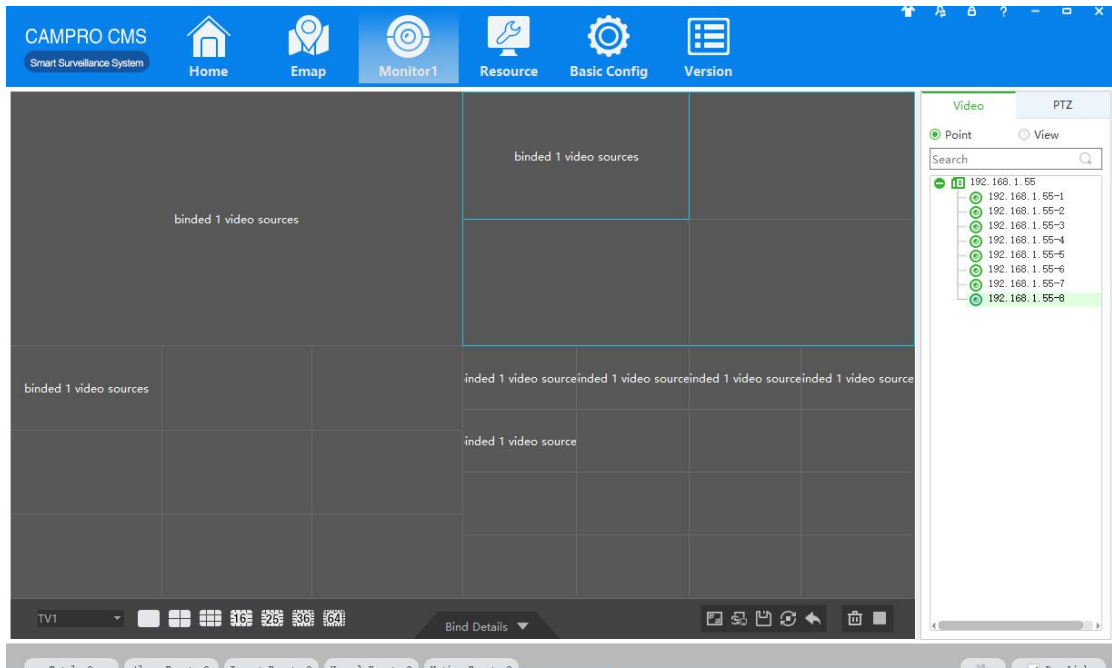


Figure 3-2 Drag Decoder to TV Wall

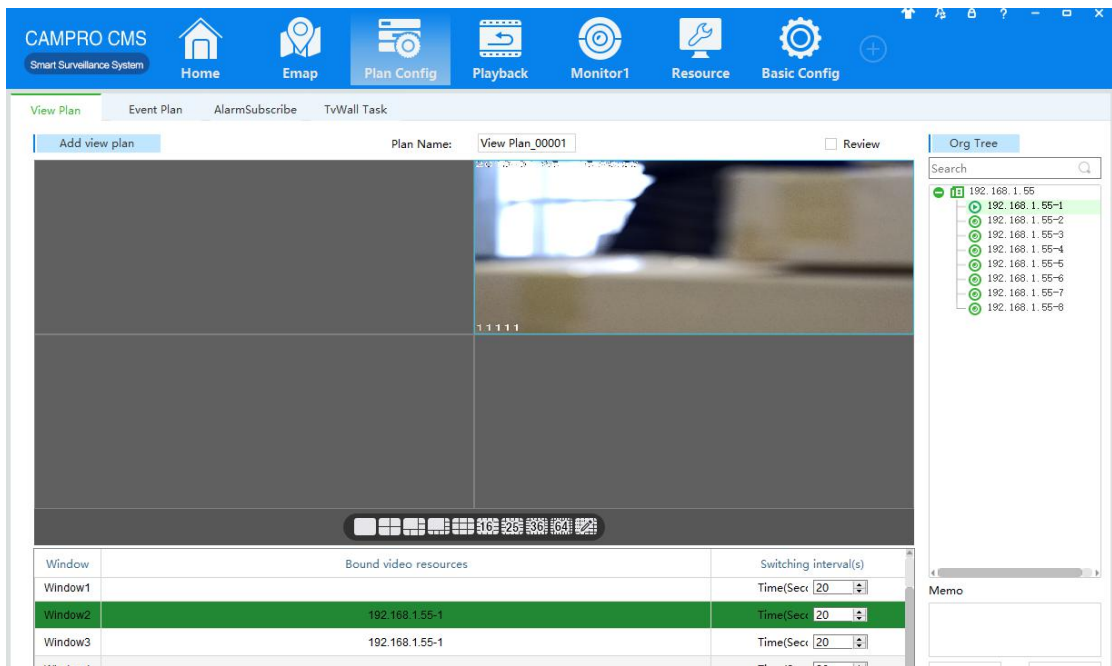


Figure 3-3 Select Screen

### 3.2.2 TV-Wall Task

TV-Wall Task configuration steps are as follows:

Step 1: click the client home page business logic (see Figure 3-4 2 Areas) in the **【Plan Config】**. System displays [TV-Wall Task] interface, as shown in Figure 3-4 is shown:

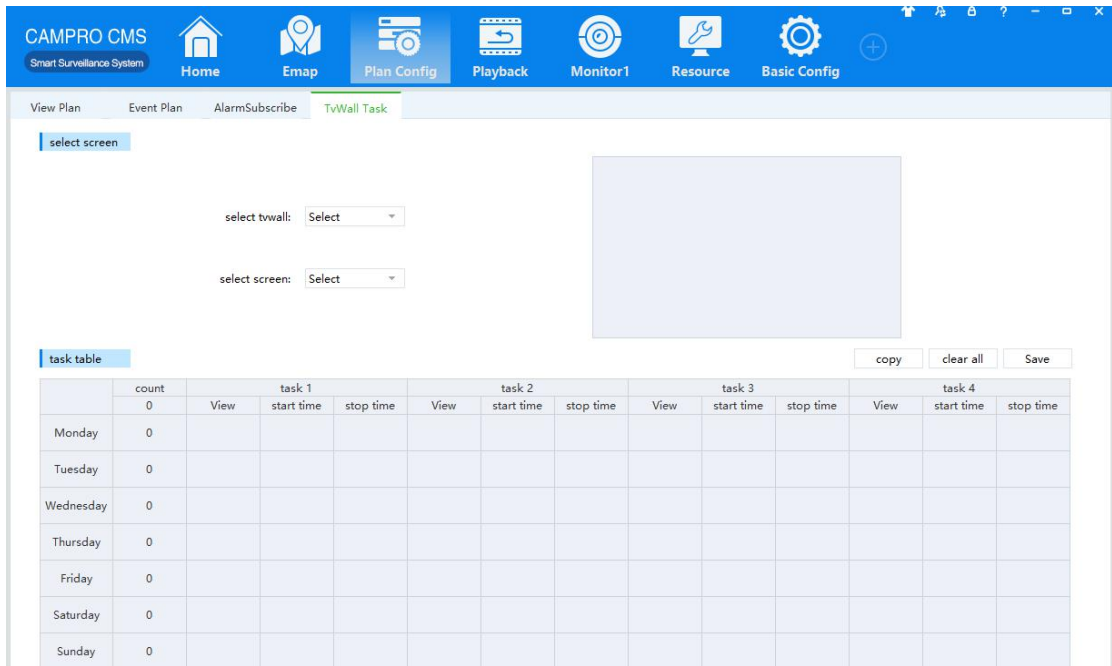


Figure 3-4 TV-Wall Task

Step 2: select the desired setting on the wall plan TV wall, the thumbnail on the right side will display the currently selected video wall layouts and its mosaic screen current number of tasks, and then select one of the video wall mosaic wall screen configuration planning.

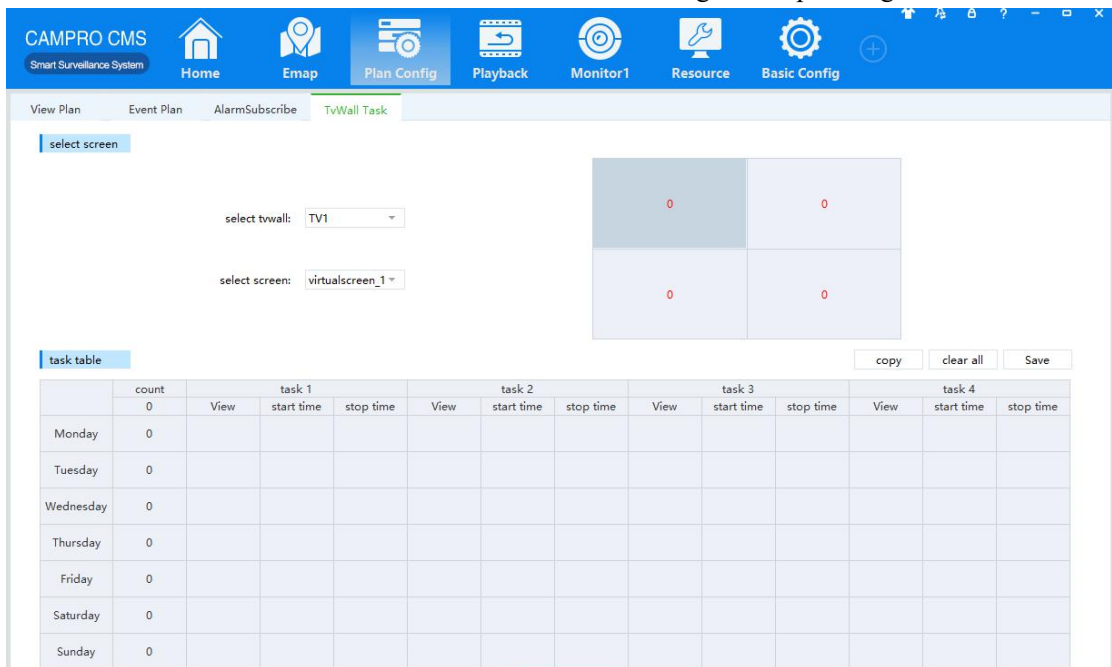


Figure 3-5 Select Screen

Step 3: set up scheduled tasks in the task list at the bottom, on the select a view list in the views of wall plan and the view on the wall of time, may have up to four tasks each day,

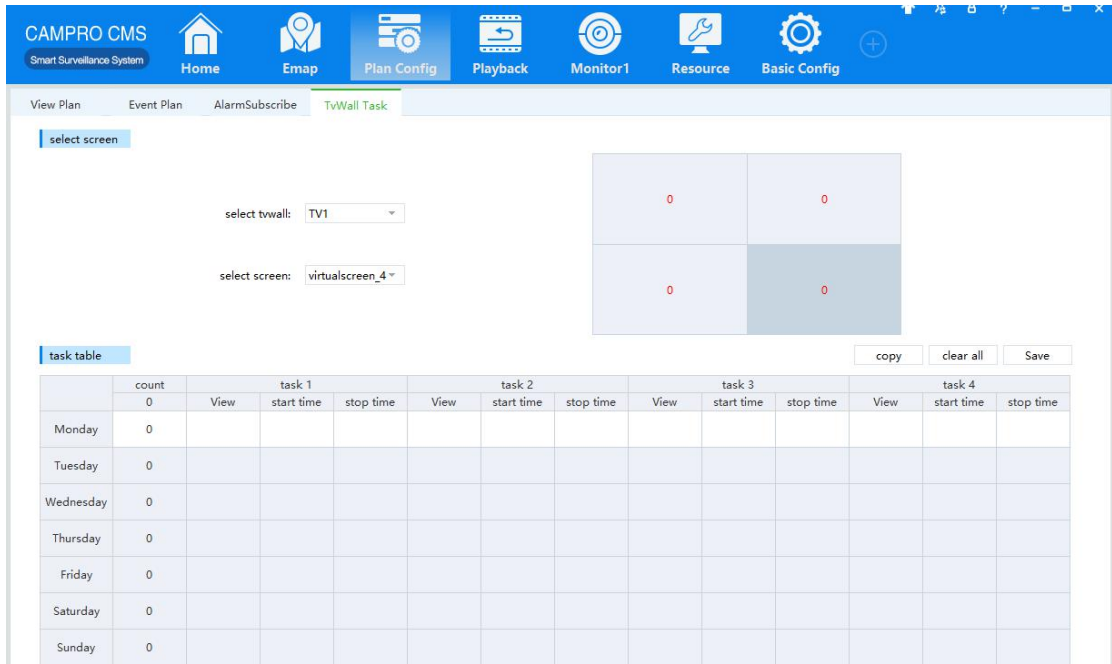


Figure 3-6 Set up Tasks

Step 4: in the right corner of the task list select the copy, select the source you want to copy a task and the time that you want to copy to, click Save;

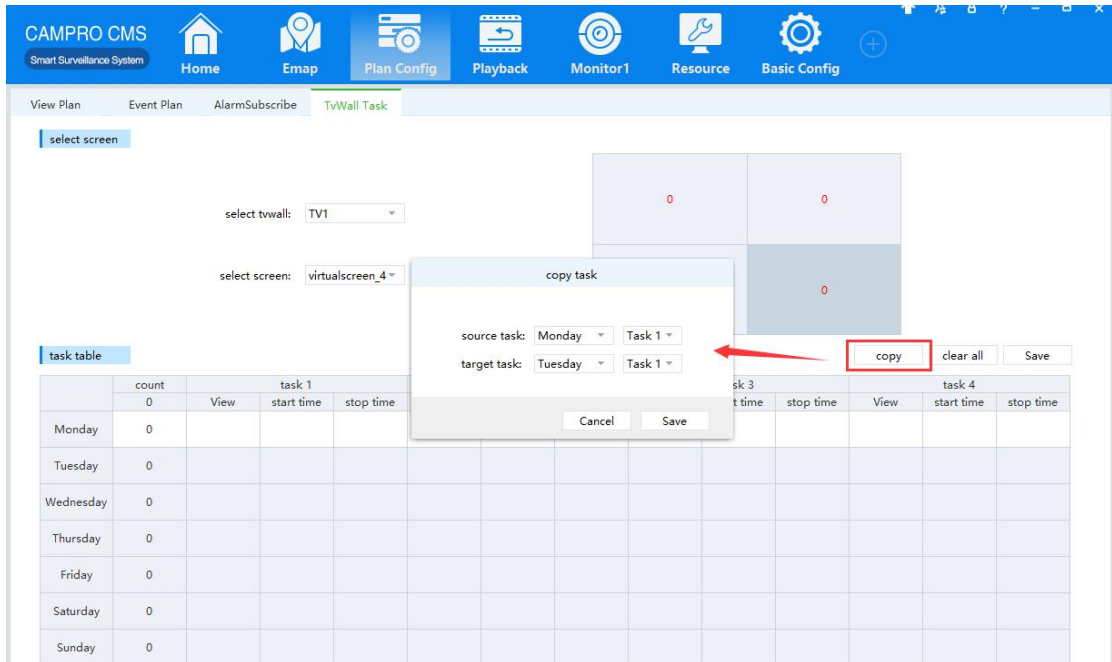


Figure 3-7 Copy Tasks

Step 5: click on the task list on the upper right corner of the Save button and save the configuration of the task list;

CAMPRO CMS  
Smart Surveillance System

Home Emap Plan Config Playback Monitor1 Resource Basic Config

View Plan Event Plan AlarmSubscribe TVWall Task

select screen

select twall: TV1

select screen: virtalscreen\_1

task table

copy clear all Save

	count	View	task 1		task 2			task 3			task 4		
			start time	stop time	View	start time	stop time	View	start time	stop time	View	start time	stop time
Monday	1	View Plan_00001	16:14:38	17:14:38									
Tuesday	1	View Plan_00001	16:15:01	17:15:01									
Wednesday	1	View Plan_00001	16:15:06	17:15:06									
Thursday	0												
Friday	0												
Saturday	0												
Sunday	0												

Figure 3-8 Save Task

### 3.2.3 Add Local Video Source to TV Wall

After the HDMI input interface of NVD3604 is connected to the video source, the IP of the corresponding interface is added to the CAMPRO CMS as the encoding device.

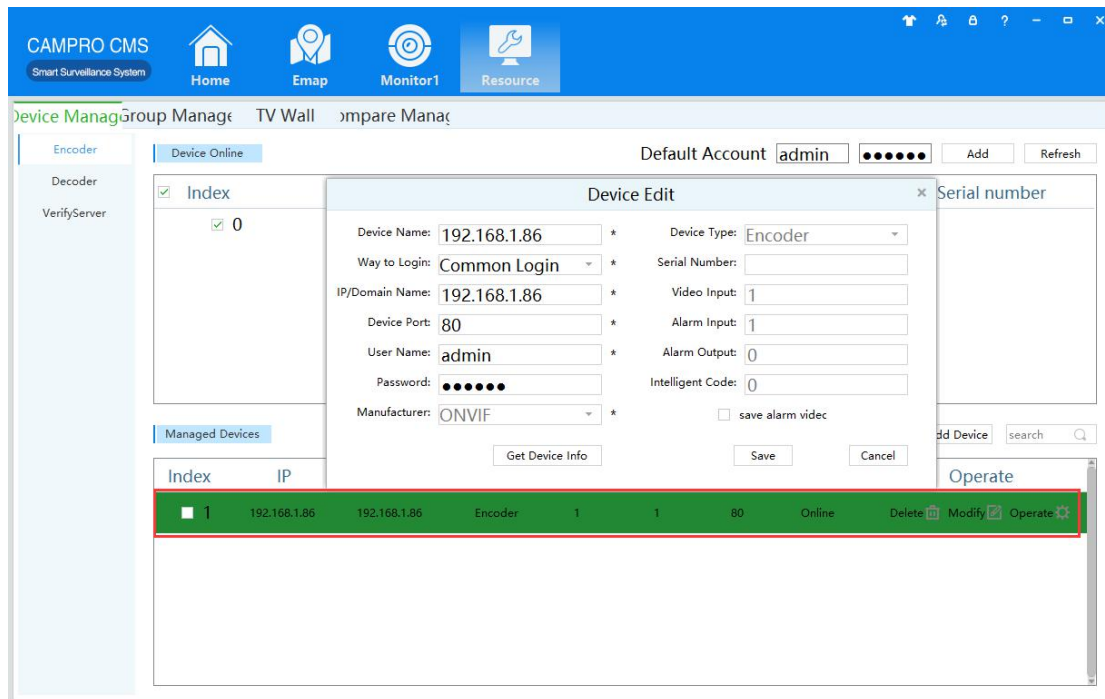


Figure 3-9 Add video source encoding channel

In the extended screen, drag the channel 1 of NVD-6404 into the virtual screen window to realize the screen shooting of computer video source

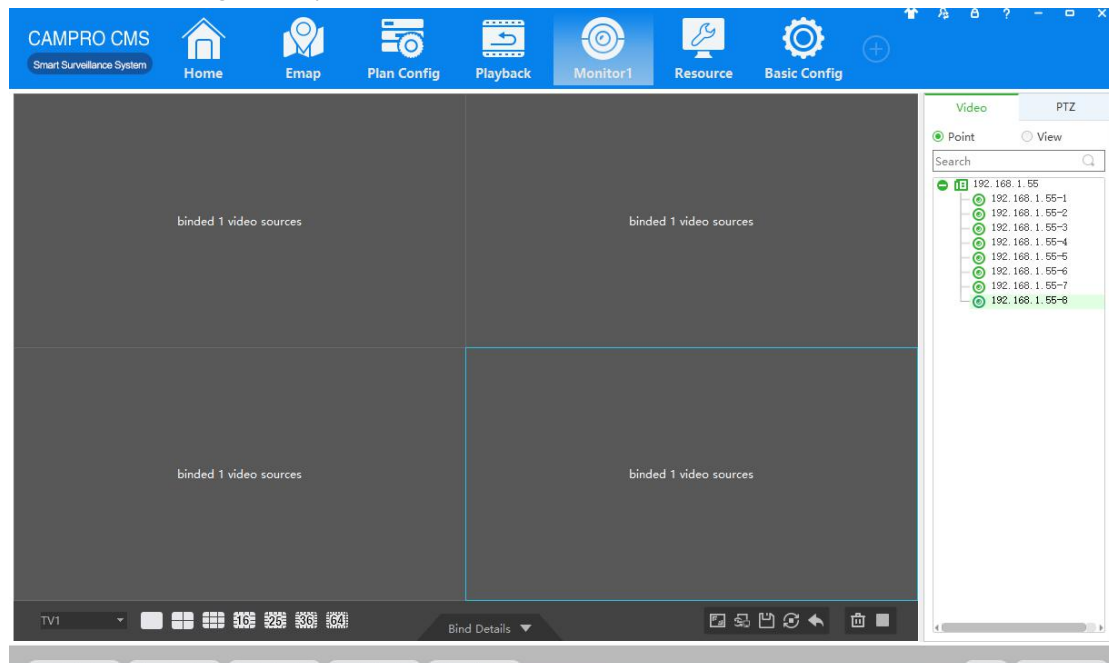
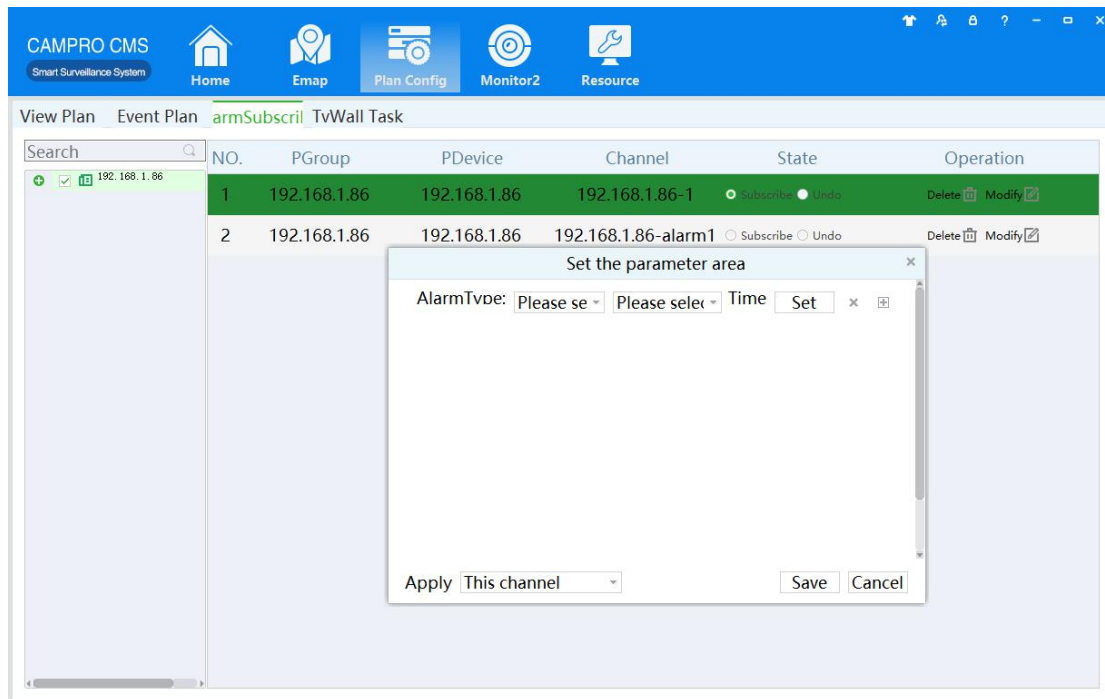


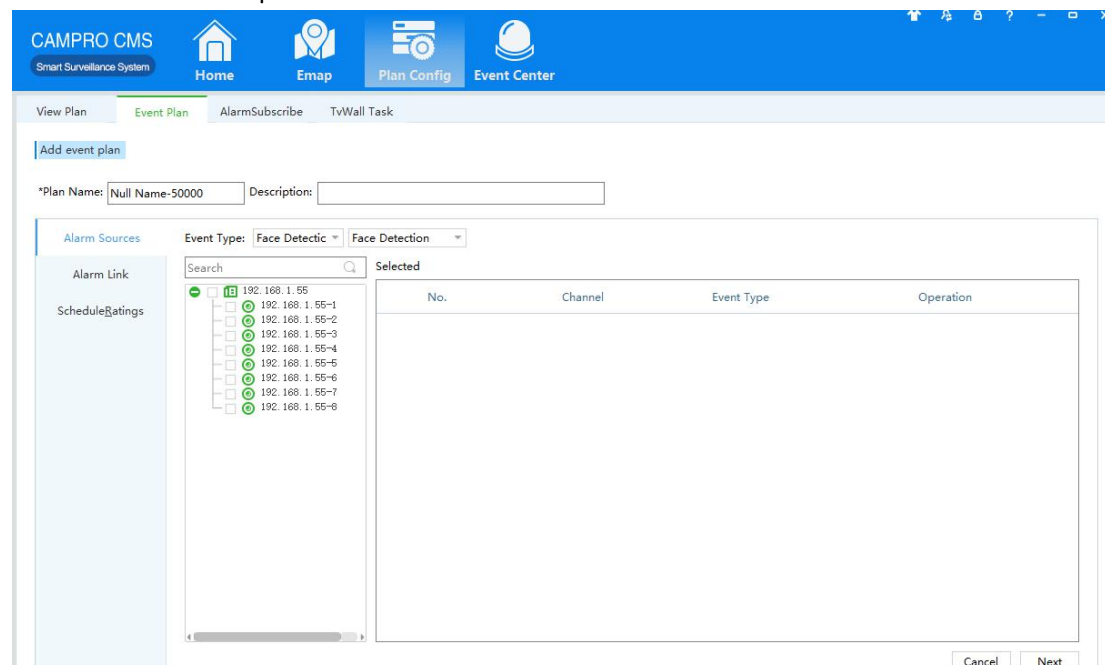
Figure 3-10 Add Local Video Source to TV Wall

### 3.2.3 Alarm linkage to the TV Wall

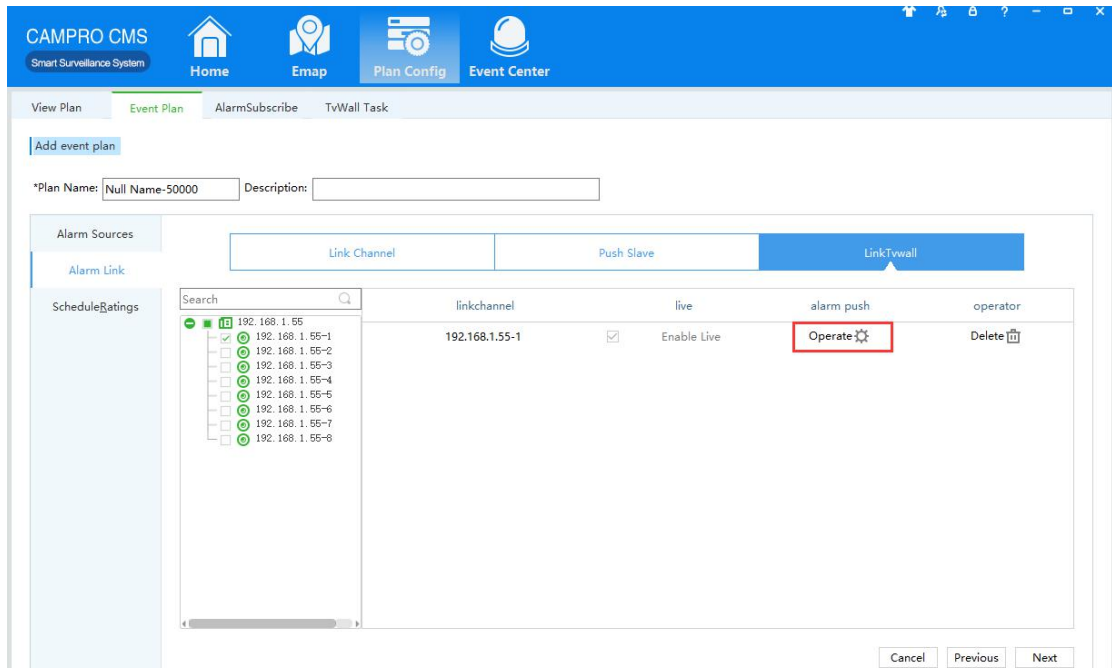
Enter the pre-plan event for alarm subscription first, and check the Alarm type and channel of the TV Wall for subscription.



After subscribing of alarm, enter event plan, select the corresponding channel and type of alarm, and enter the next step



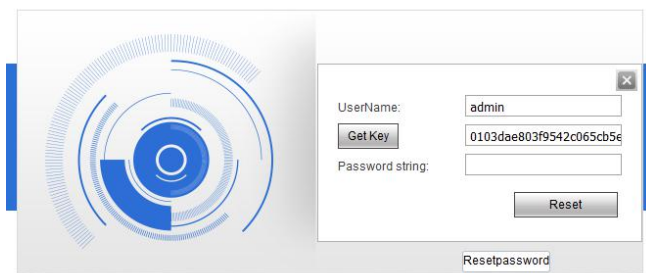
Alarm linkage, select push TV Wall, select corresponding channel and click operation, select virtual screen on the TV Wall, and complete alarm linkage configuration on the TV Wall



## 4 Parameter Configuration

### 4.1 Reset Pass Word

After the user forgets his/her password and cannot log in the device, he/she enters the web page of the device, clicks the reset password, obtains the key and provides it to the after-sales department of the product. After entering the password string returned by the after-sales department, login password of the device to reset new pass word.



### 4.2 Output Resolution Setting

The resolution of the DVI output interface can be selected (only resolution 1 supports 4K

output, corresponding to DVI1 and DVI3 of their respective rear boards).