
P2P Web Operation Manual

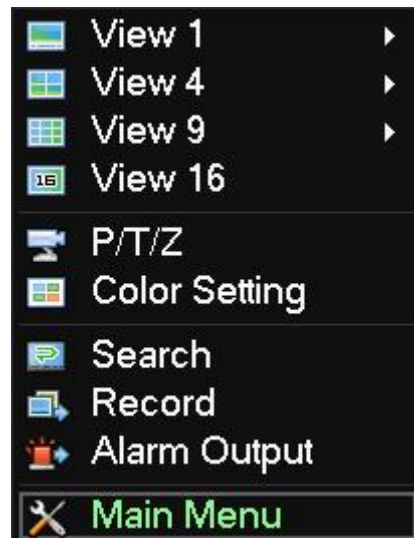
Menu

| | | |
|-----------|------------------------------------|-----------|
| Chapter 1 | Device Configuration..... | 错误！未定义书签。 |
| 1.1 | Config P2P Function in device..... | 2 |
| Chapter 2 | P2P Web Operation..... | 错误！未定义书签。 |
| 2.1 | ActiveX Installation..... | 错误！未定义书签。 |
| 2.2 | Login Interface..... | 错误！未定义书签。 |
| 2.3 | Device Management..... | 错误！未定义书签。 |
| 2.4 | Realtime Video Monitor..... | 14 |
| 2.5 | PTZ Control..... | 16 |
| 2.6 | Log out..... | 错误！未定义书签。 |
| Chapter 3 | Device Upgrade..... | 错误！未定义书签。 |
| Chapter 4 | Q&A..... | 错误！未定义书签。 |

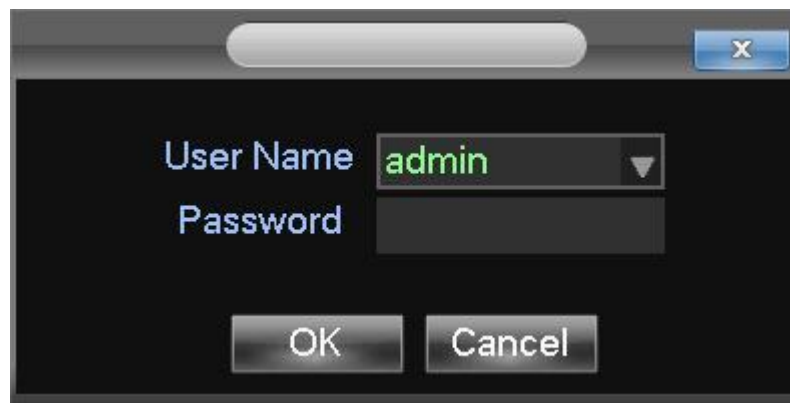
Chapter 1 Device Configuration

1.1 Check the Status of the Device Connect to Server

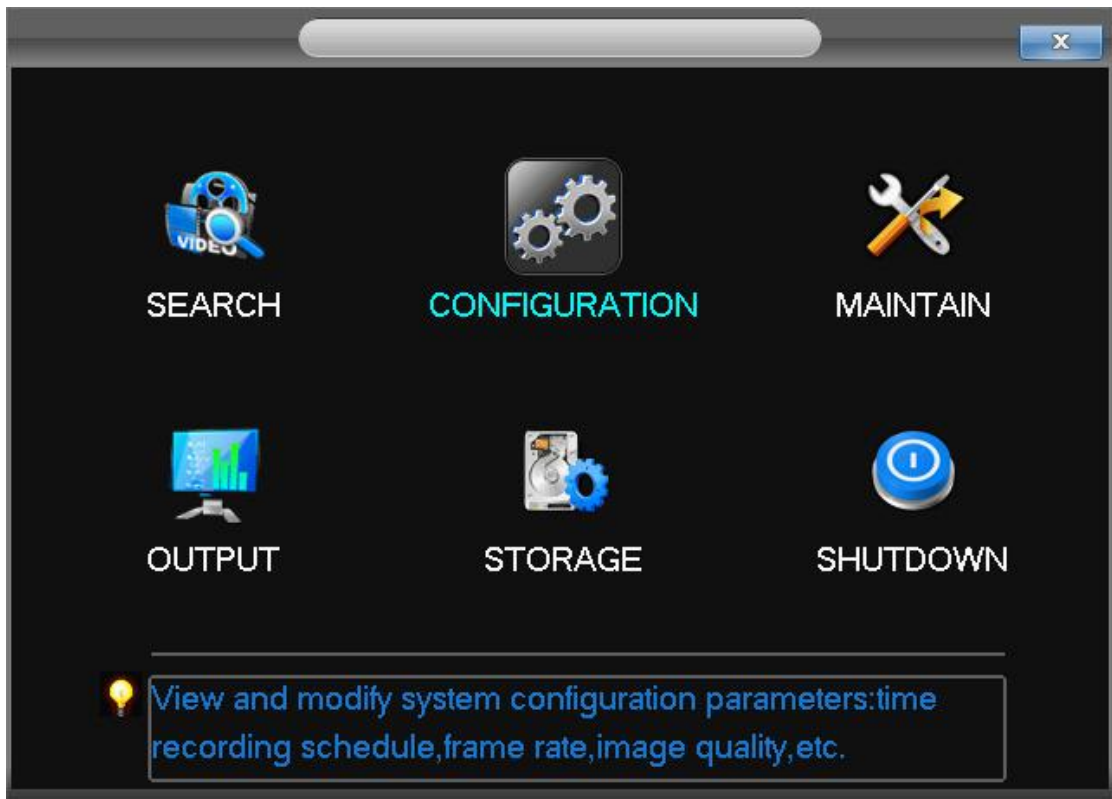
Step 1: Click the Main Menu



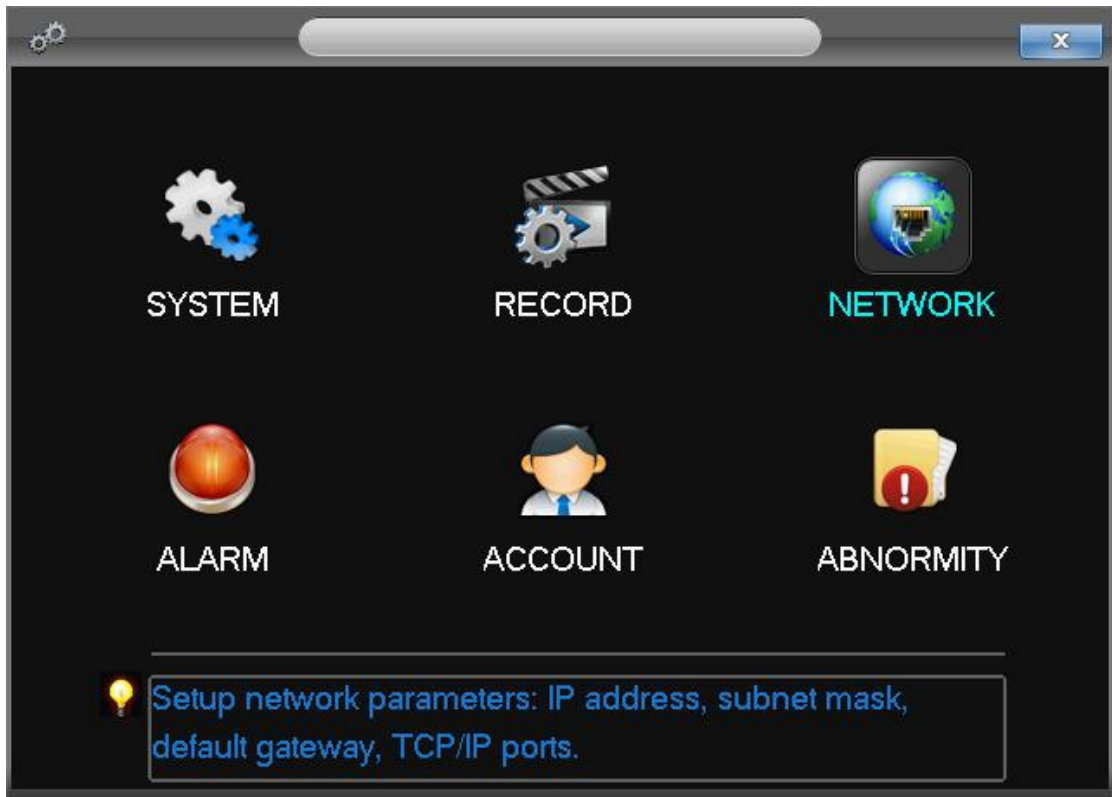
Step 2: Input DVR password



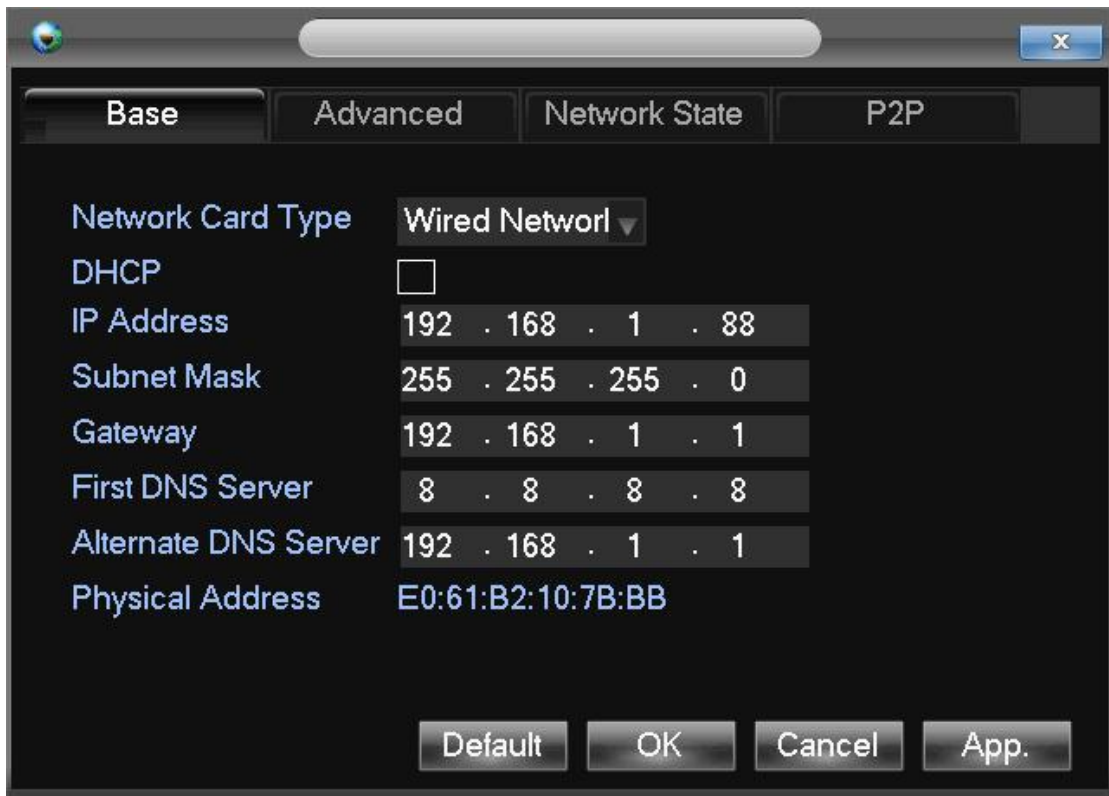
Step 3: Enter Main Menu, and click Configuration



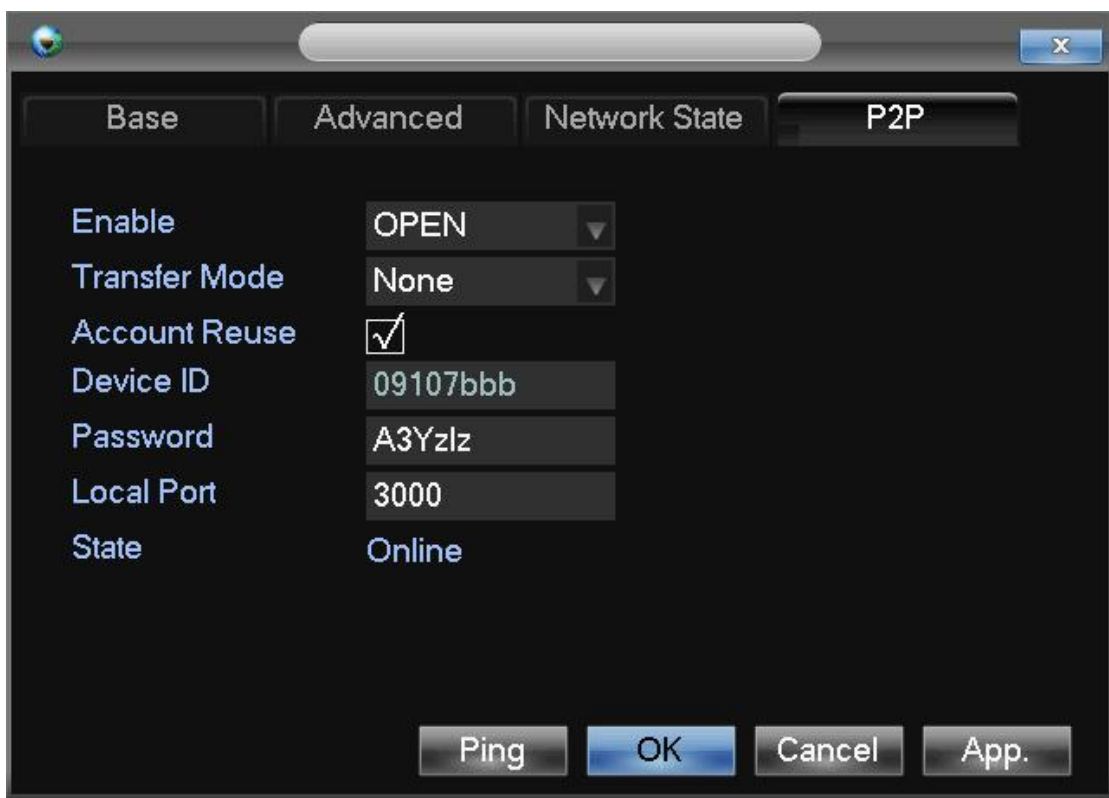
Step 4: Click NETWORK



Step 5: Click P2P



Step 6: Result after Clicking P2P.



Step7: Enable P2P by clicking OPEN, and click OK to finish the device configuration.

“Enable”: Open or Close

“Device ID”: Each serial number Of devices are different, this cannot be modified.

“Password”: This is generated by the system, you can change it.

“Local Port”: Default is 3000, can be modified.

“State”: Check the connect status of the device and the server.

- ① Online
- ② Offline, cannot connect to Internet.

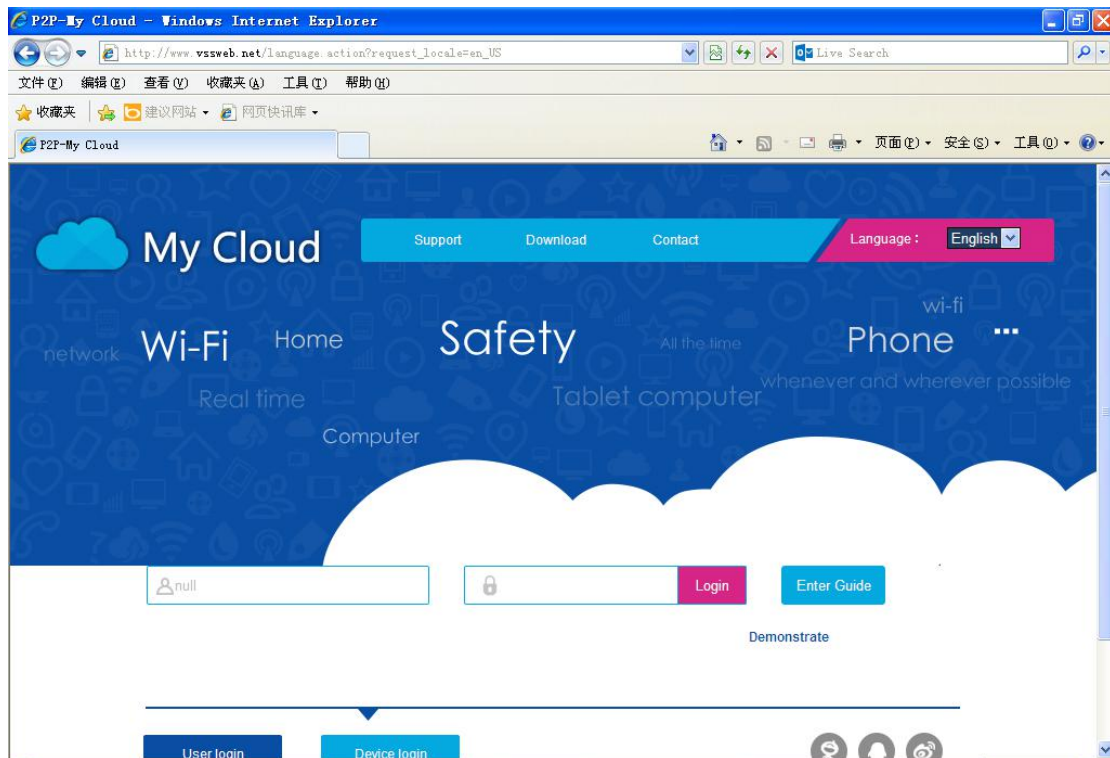
When it shows Offline, click **【Ping】** to check the connect status again.

Note: If the status still shows offline, please check the if the network light is on, and the device is connected or not.

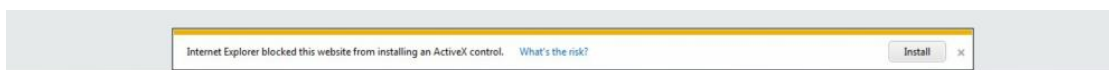
Chapter 2 P2P Web Operation

2.1 ActiveX Installation

Enter the P2P address (The IP address of the server PC, eg: <http://www.vssweb.net>), and log in.



There will be a pop-up security warning by IE

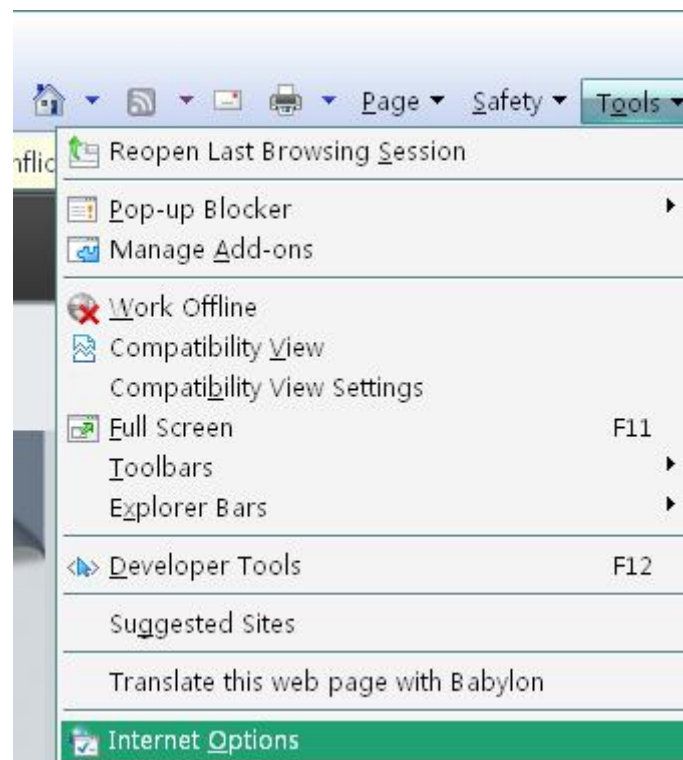


Click Running the ActiveX

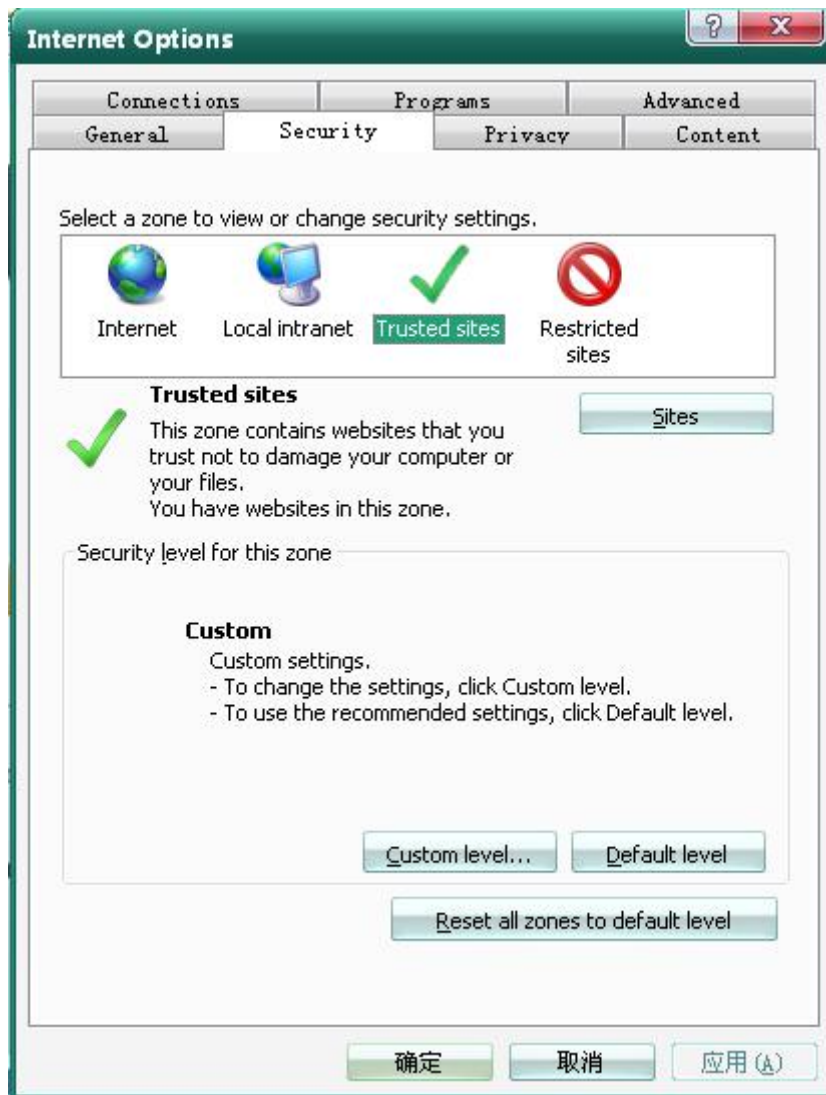


ActiveX cannot be downloaded, IE security level is high, check and set the security settings

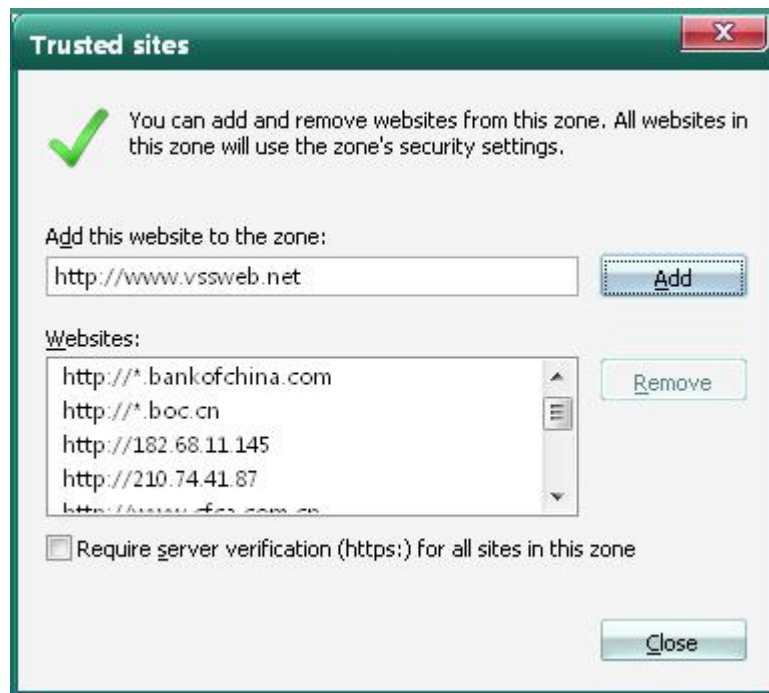
Step 1, Click **【Tools】**, Choose “Internet Options”, which shows below:



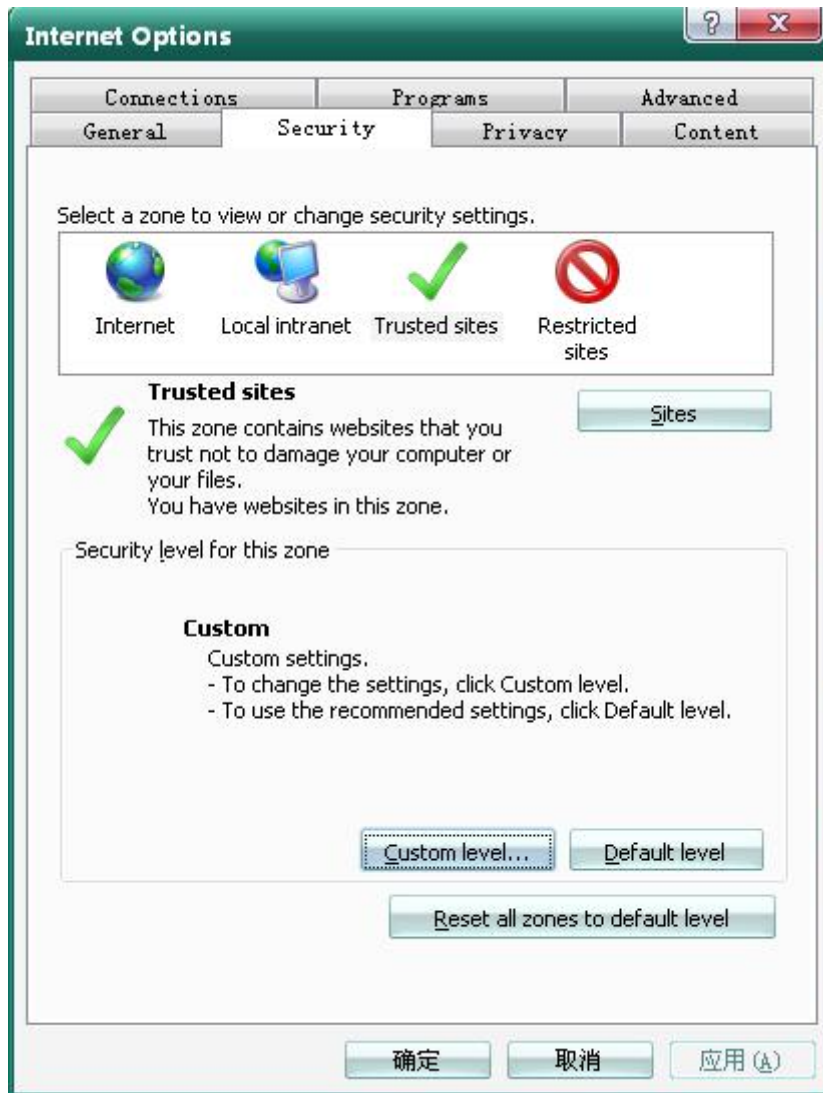
Step 2, choose “Trusted Sites”, choose **【Sites】**, shows below:



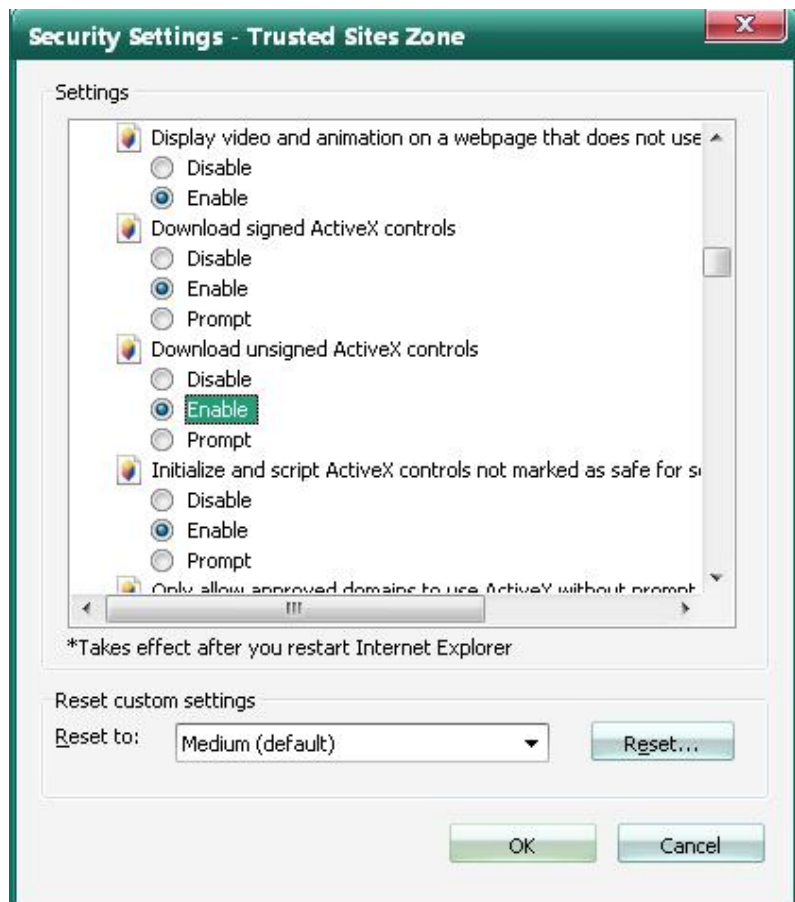
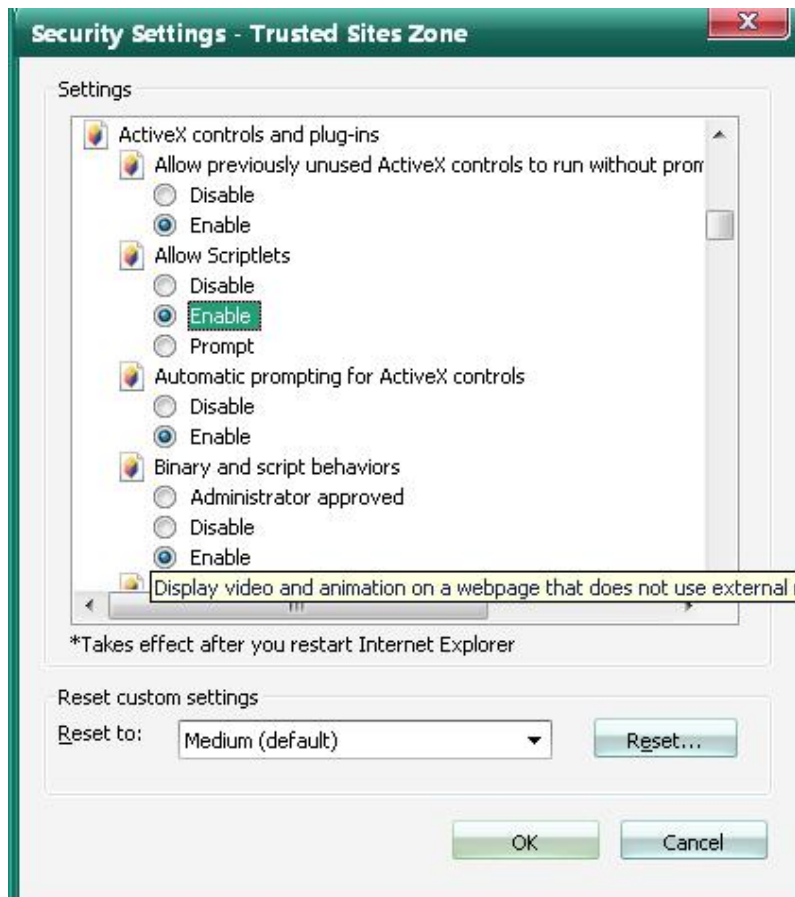
Step 3, Click **【Add】**, after adding success, click **【Close】**, shows below:

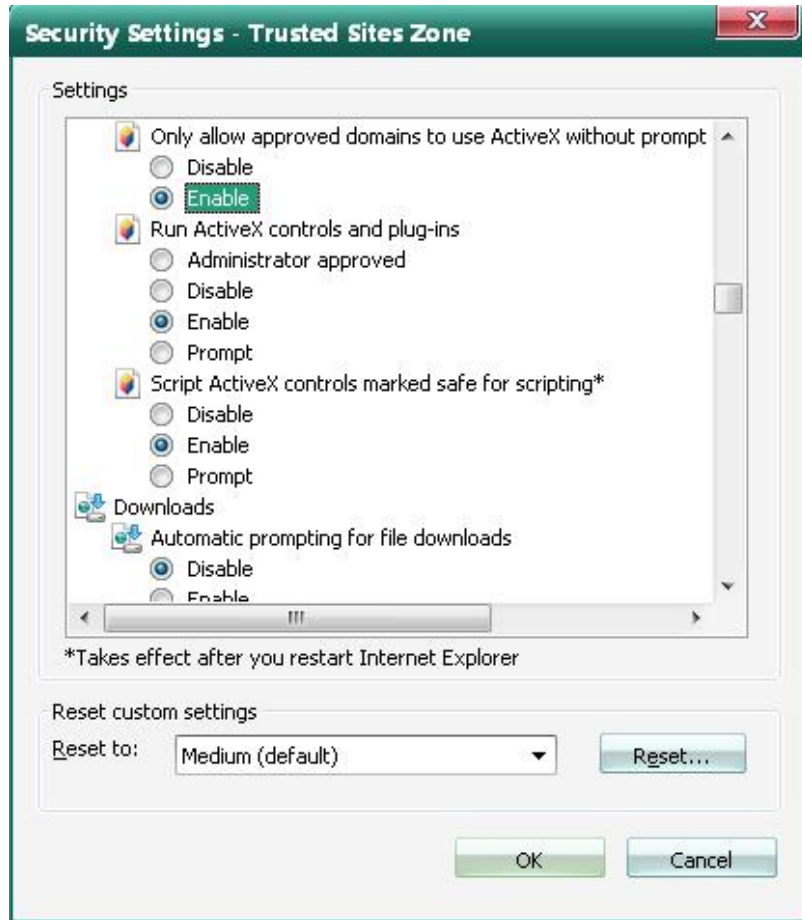


Step 4, choose to click **【Custom level】**, shows below:



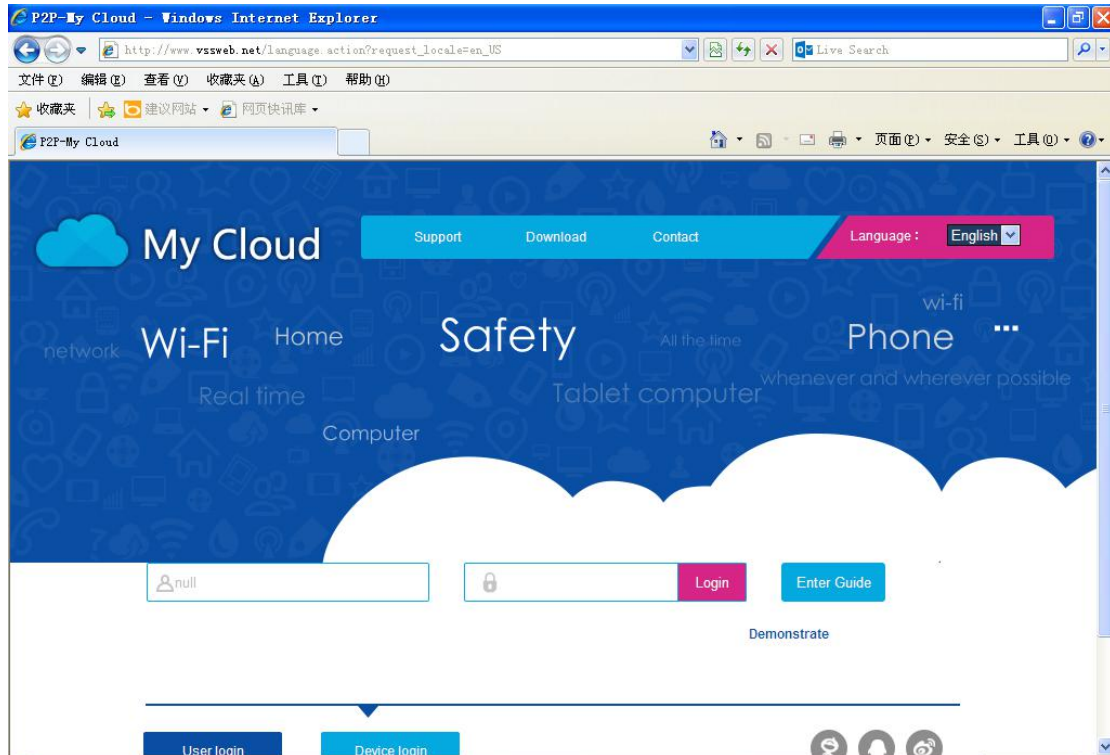
Step 5, Enable all ActiveX prompts、download and run, click 【OK】, shows below:





Step 6, refresh the website again, click **【Install】**, shows below:





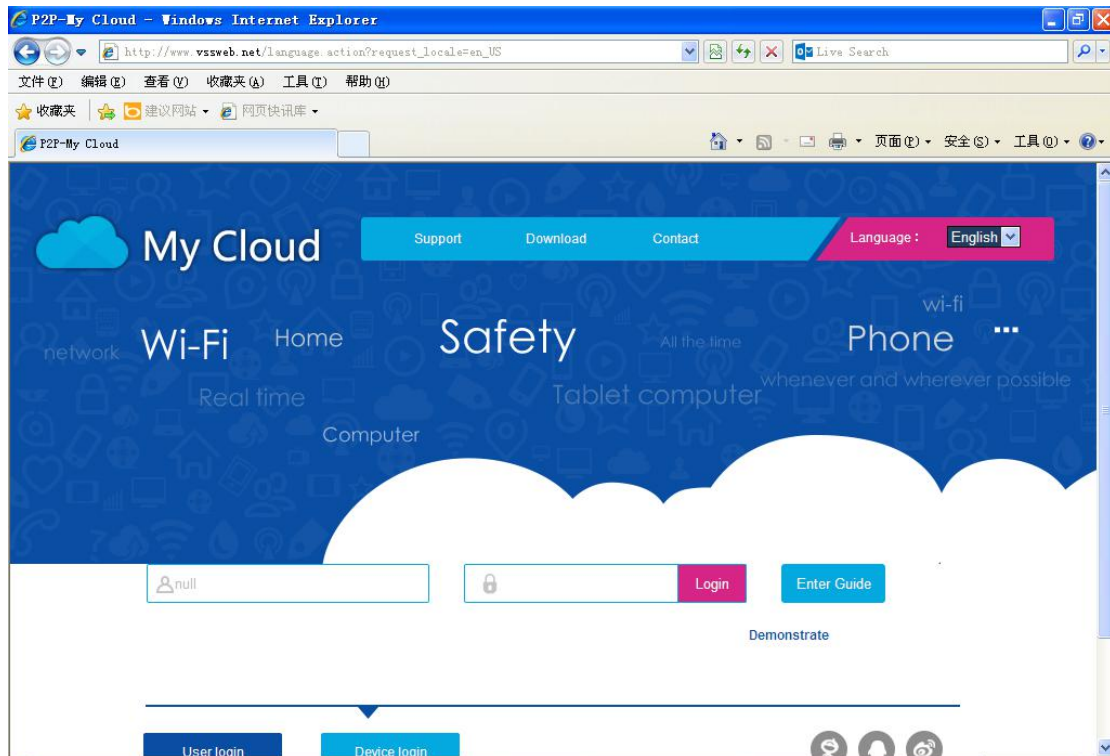
Shows the ActiveX is installed successfully, it can work properly

Notice: If users do not like to set the IE or ActiveX cannot be downloaded, they can choose to download the ActiveX manually: click "Download" or download "P2P.exe" from the "User login", after downloading, double click to install.

2.1 Log in Interface

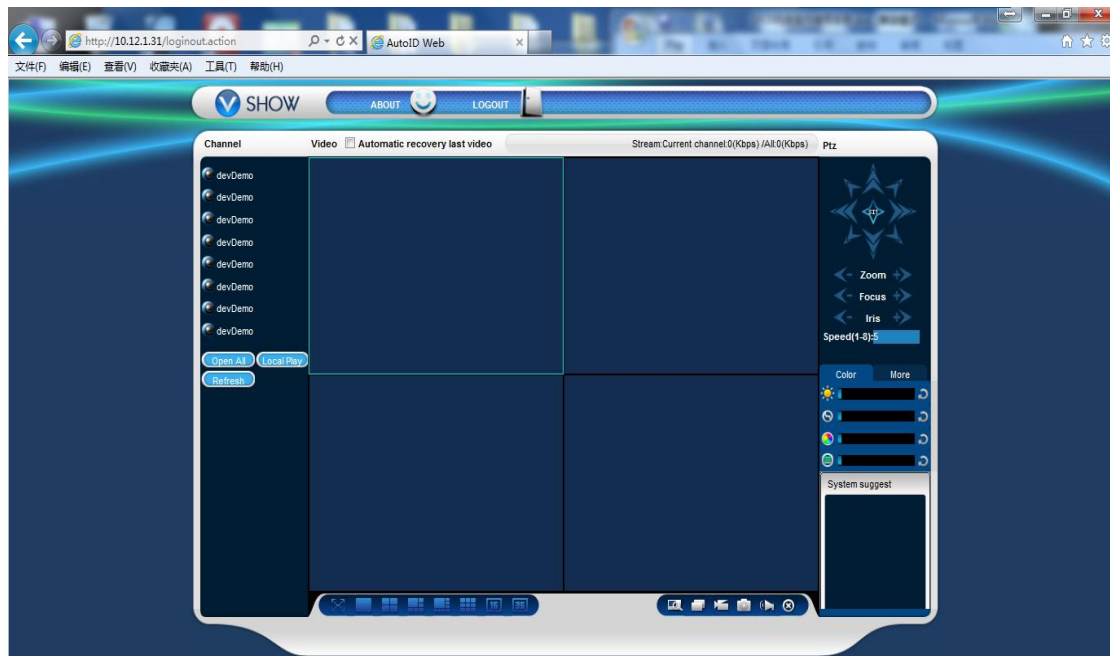
There are two different login interfaces, User Login Interface & Device Login Interface. When using User Login, enter username & password. When using Device Login, enter

Serial No. & Password.



The manual can guide to help you with the device login, the user login mode can assist to manage a few more devices effectively.

The following is a detailed description of interface after log in.



2.1 Device Management

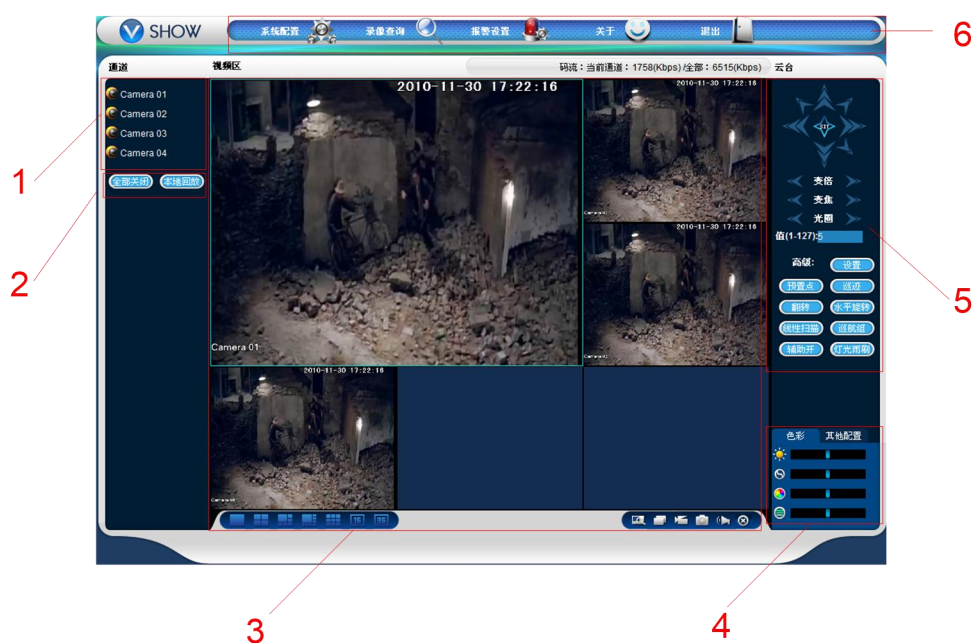


Chart 5- 3 WEB Manual Interface

Description of different functions:

| No. | Type | Description |
|-----|-----------------------------------|--|
| 1 | Select the Channel No. | Select the Channel No. To be displayed on screen. |
| 2 | Function Key | Local Playback: Select the local recording files to do the playback. Open All: Open all channels and display on screen. |
| 3 | Video Monitoring Window | Show real-time video or video playback. |
| 4 | Image Color & Other Configuration | Brightness, Contrast, Saturation of the image. Other functions like PIC Path, REC Path, Reboot. |
| 5 | PTZ Control | PTZ Menu |
| 6 | System Menu | System Configuration, Video Search, Alarm Set, About, Exit functions. |

Chart 5- 1 Function Area Description

2.1 Real-time Video Monitor

On the left side of the interface, there is a list of the channels displayed, click to open the real-time display of each video channel.

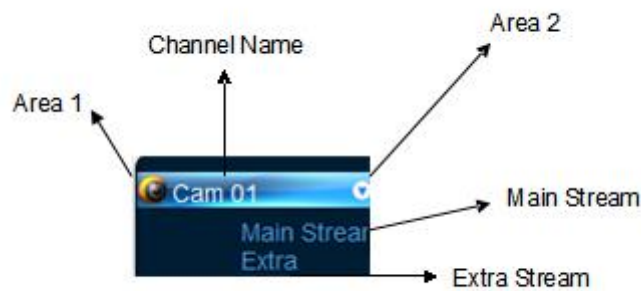


Chart 5- 4 Channel Selection


Click Area 2 to open or close the selection of Main stream or Extra Stream. As Chart 5-5 shows the IP info and the current stream info of the DVR.



Chart 5- 5 Channel Stream Info

On the left below direction of the video window, shows the channel names.

On the right up direction of the video window, shows the time info.

Select to switch different modes of channel display by .

The function button chart with different detailed functions in Chart 5- 6.



Digital Zoom: Enable to zoom big of certain monitoring windows.



Change Show Mode: Can change the monitoring windows into one-channel to multi-channel switch mode.



Local Record: Save a video to the local PC or through rec record path to other devices while real-time displaying.



Capture Picture: Capture pictures of the current channel, the default picture save path can be set in other configuration.



Audio: Turn on/off of the audio.



Close Video: Click to close the video window.



Chart 5- 6 Function Button Chart

2.2 PTZ Control

Before using PTZ control, users should set PTZ protocol, please refer to 【 External Configuration】 → 【PTZ Configuration】 ; otherwise the PTZ control is not available.

It is to control the PTZ direction, speed, zoom, focus, presets, light, Wipe, Auto tour etc.

Speed is used for direction operation, ie. When the speed is 8, the PTZ speed is much faster than the speed at 1.

The PTZ supports to rotate 8 directions; up, down, left, right, left up, right up, left down, right down.



Chart 5- 7 PTZ Control

Preset:

Click the directions to turn the cameras to different needed places, enter the Preset Value., and click Add Preset to Save.

Pattern:

This is recorded as Pattern Route X, click to start recording, and then turn back to PTZ control menu to operate zoom, focus, iris or directions etc. Turn back to Pattern set menu, click stop. This is a complete Pattern route.

Auto Scan:

Auto scan the left boundaries by clicking direction buttons, and set the left boundary positions. The same goes for the right boundary auto scan. This is a complete route of the auto-scan.

Auto Tour:

Input auto tour route value, and input the preset numbers; click Add button to add a preset in the tour. Users can add or delete a few more presets. At the same time, to delete the tour routes within one presets.

AUX Open:

Choose one of the items, and click start or stop button.

Light Wipe:

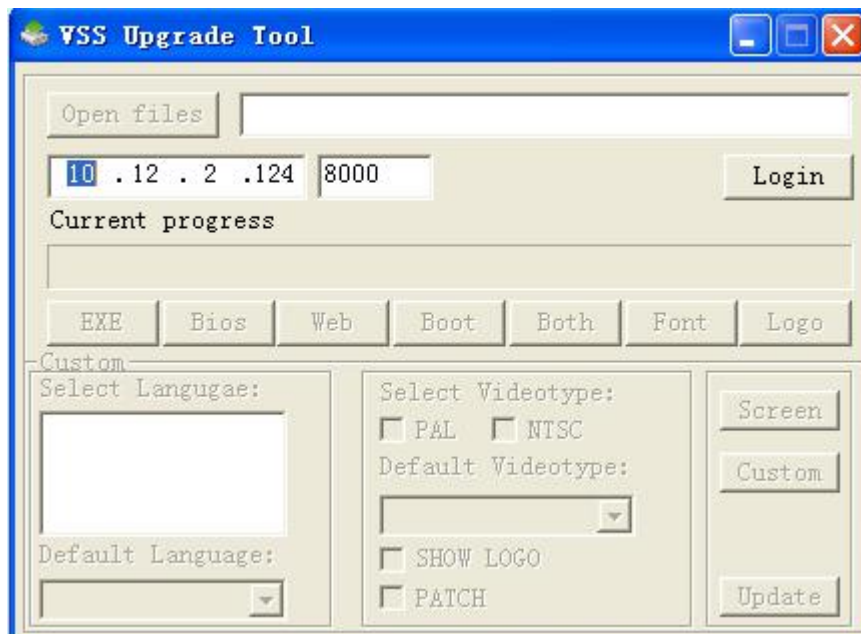
If the PTZ Protocol supports Light and Wipe, this function can be adopted.

2.3 Logout

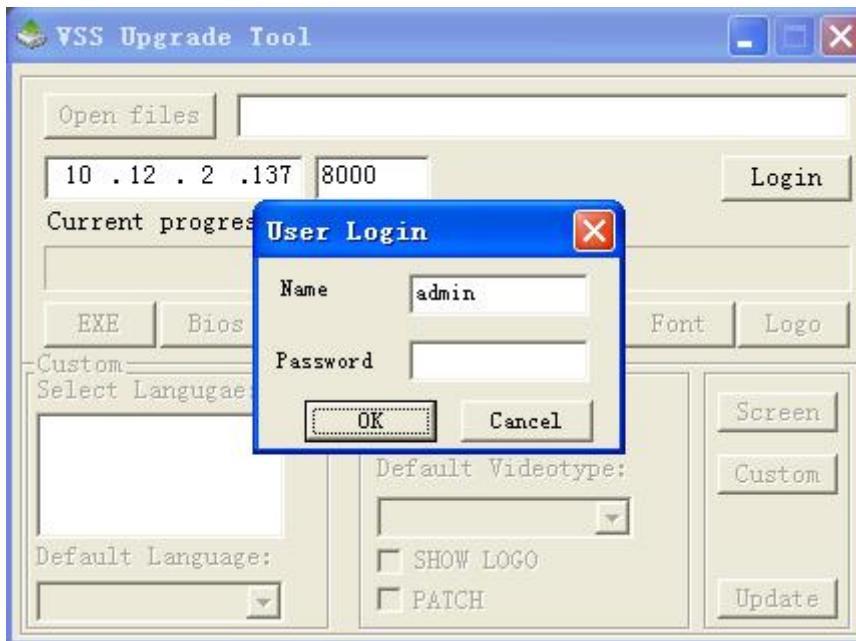


Chapter 3 Device Upgrade

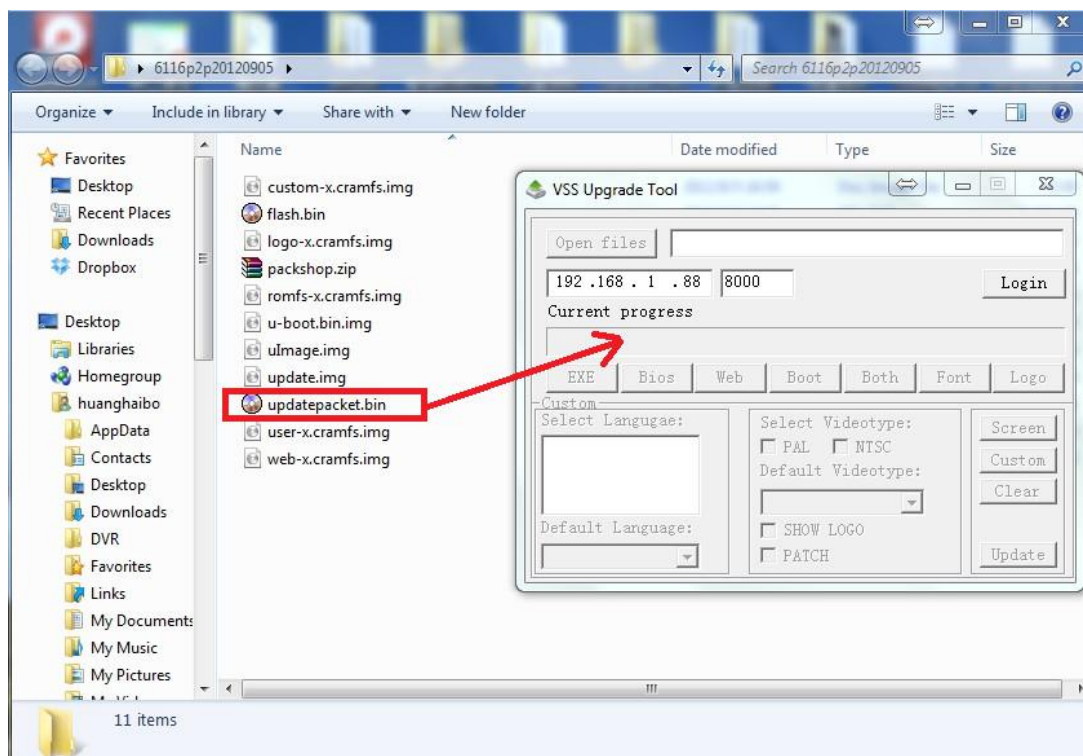
1. Decompression the DVR upgrade file, ie. DeviceUpdate_V1.10.R.20120822.rar;
2. Double click the DVR web upgrade tool (RECUUpgrade.exe);



3. Enter DVR device IP & TCP port no., click Login;



4. Enter correct username & password; click Ok to log in the device;
5. After login, drag the decompressed updatepacket.bin file to the column after the open files;



6. Click BIOS to begin upgrade successfully.

Chapter 4 Q & A

Q: When logging in to the WEB Client, the ActiveX cannot run properly, and can not realtime display the video.

A: Open the browser, click Tools>Internet Options>Security>Trusted Sites, and add

<http://www.vssweb.net>. Please refer to the ActiveX Control installation part for details.

B. If users do not like to set the IE or ActiveX cannot be downloaded, they can choose to download the ActiveX manually: click "Download" or download "P2P.exe" from the "User login", after downloading, double click to install.